

# TM 5-4320-237-25P

DEPARTMENT OF THE ARMY TECHNICAL MANUAL

---

ORGANIZATIONAL, DIRECT AND GENERAL SUPPORT,  
AND DEPOT MAINTENANCE REPAIR PARTS  
AND SPECIAL TOOLS LISTS

PUMP, CENTRIFUGAL GASOLINE ENGINE DRIVEN,  
50 GPM, 100 FT HEAD, FLAMMABLE LIQUID,  
BULK TRANSFER (BARNES MODEL 28002)

FSN 4320-913-7131



HEADQUARTERS, DEPARTMENT OF THE ARMY

MAY 1967



**Changes in force: C1, C2, and C3**

**TM 5-4320-237-25P**  
**C 3**

CHANGE

NO. 3

HEADQUARTERS  
DEPARTMENT OF THE ARMY  
WASHINGTON, D.C., 12 March 1991

Organizational, Direct and General Support,  
and Depot Maintenance Repair Parts and  
Special Tools List

**PUMP, CENTRIFUGAL: GASOLINE ENGINE DRIVEN, 50 GPM,  
100 FT HEAD, FLAMMABLE LIQUID, BULK TRANSFER  
(BARNES MODEL QM-2-28002)  
FSN 4320-913-7131**

Approved for public release; distribution is unlimited

TM 5-4320-237-25P, 25 May 1967, is changed as follows:

Page v. Paragraph 8 is superseded as follows:

**8. Reporting of Equipment Publication Improvements.**

The reporting of errors, omissions, and recommendations for improving this publication by the individual user is encouraged. Reports should be submitted on DA Form 2028, Recommended Changes to Publications and forwarded direct to the Commander, U.S. Army Troop Support Command, ATTN: AMSTR-MMTS, 4300 Goodfellow Blvd., St. Louis, MO 63120-1798.

All changes, additions, or deletions of Federal Stock Numbers or Manufacturers Part Numbers within these changes should be appropriately reflected in the index.

Page 10, Line 0037, Columns 1a and 1b. Change SMR Code from P to X in Column 1a and change F to B in Column 1b. Delete FSN 2805-301-6336.

Page 41. Delete FSN 2805-301-6336.

**By Order of the Secretary of the Army:**

CARL E. VUONO  
*General, United States Army*  
*Chief of Staff*

Official:

THOMAS F. SIKORA  
*Brigadier General, United States Army*  
*The Adjutant General*

DISTRIBUTION:

To be distributed in accordance with DA Form 12-25E, (qty rqr block no. 1376)



CHANGE

No. 2



HEADQUARTERS  
DEPARTMENT OF THE ARMY  
WASHINGTON, D.C., 19 April 1973

**Organizational, Direct Support, General Support,  
and Depot Maintenance Repair Parts and  
Special Tools List  
PUMP, CENTRIFUGAL: GASOLINE ENGINE DRIVEN,  
50 GPM, 100 FT HEAD, FLAMMABLE LIQUID,  
BULK TRANSFER  
(BARNES MODEL QM-2-28002)  
FSN 4320-913-7131**

TM 5-4320-237-25P, May 1967, is changed as follows:

*Page 5.* In line 277, column 2, add FSN 4320-140-7062.

*Page 6.* In line 289, column 2, add FSN 4940-229-9563.

In line 290, column 2, add FSN 4940-229-9564.

*Page 8.* Add line 349A as follows: Column (1): PO, Column (2): 4730-897-4857; Column (3): Plug, Fuel Nozzle, Grounding P/N 616W (81718); Column (4): EA; Column (6): 2; Column (7): (a) (b) (c) (d) \* \* \* \*

In line 353, Column 2, change FSN 4320-B90-0014 to read FSN 4320-988-9458.

In line 357, column 2, change FSN 4320-B90-0015 to read FSN 4320-934-7865.

*Page 12, Section IV.* In line 96, column 2, change FSN 2805-215-3827 to read FSN 2805-776-8151.

*Page 17.* In line 277, column 2, add FSN 4320-140-7062.

*Page 18.* In line 289, column 2, add FSN 4940-229-9563.

In line 290, column 2, add FSN 4940-229-9564.

*Page 20.* In line 353, column 2, change FSN 4320-B90-0014 to read FSN 4320-988-9458.

In line 357, column 2, change FSN 4320-B90-0015 to read FSN 4320-934-7865.

Delete lines 358 thru 360, in their entirety.

All changes, additions, and deletions of Federal stock Numbers, Manufacturers Codes and part numbers should be appropriately reflected in the index.

By Order of the Secretary of the Army:

CREIGHTON W. ABRAMS  
*General, United States Army*  
*Chief of Staff*

Official:

VERNE L. BOWERS  
*Major General, United States Army*  
*The Adjutant General*

Distribution:

To be distributed in accordance with DA Form 12-25A (qty rqr block No. 154) organizational maintenance requirements for Petroleum Distribution.

☆U.S. GOVERNMENT PRINTING OFFICE: 1973-769619/626

Change }  
No. 1 }

HEADQUARTERS  
DEPARTMENT OF THE ARMY  
Washington, D. C., 25 March 1971

**Organizational, Direct and General Support,  
and Depot Maintenance Repair Parts and  
Special Tools List**

**PUMP, CENTRIFUGAL: GASOLINE ENGINE DRIVEN, 50 GPM,  
100 FT HEAD, FLAMMABLE LIQUID, BULK TRANSFER  
(BARNES MODEL QM-2-28002)  
FSN 4320-913-7131**

Current as of 23 February 1971

TM 5-4320-237-25P, 25 May 1967, is changed as follows:

*Cover Page and Page i.* Title is changed as indicated above.

*Page v.* Paragraph 8 is superseded as follows:

**8. Reporting of Equipment Publication  
Improvements.**

The reporting of errors, omissions, and recommendations for improving this publication by the individual user is encouraged. Reports should be submitted on DA Form 2028, Recommended Changes to Publications and forwarded direct to the Commanding General, U. S. Army Mobility Equipment Command, ATTN: AMSME-MPP, 4300 Goodfellow Blvd., St. Louis, MO. 63120.





By Order of the Secretary of the Army:

W. C. WESTMORELAND,  
*General, United States Army,*  
*Chief of Staff*

Official:

KENNETH G. WICKHAM,  
*Major, General, United States Army,*  
*The Adjutant General.*

Distribution:

To be distributed in accordance with DA Form 12-25, Section I (qty rqr block no. 246) Organizational Maintenance requirements for Pumps, Centrifugal: Petroleum.

\*U.S. GOVERNMENT PRINTING OFFICE: 1971-431 129/1091



Organizational, Direct and General Support,  
and Depot Maintenance Repair Parts and Special Tools Lists  
PUMP, CENTRIFUGAL: GASOLINE ENGINE DRIVEN, 50  
GPM, 100 FT HEAD, FLAMMABLE LIQUID, BULK TRANSFER  
(BARNES MODEL 28002)  
FSN 4320-913-7131

	Paragraph	Page
<b>SECTION I. INTRODUCTION</b>		
Scope .....	1	iii
General .....	2	iii
Explanation of columns .....	3	iii
Special information .....	4	iv
Instructions for locating repair parts .....	5	v
Abbreviations .....	6	v
Index of Federal supply codes .....	7	v
Reporting of equipment publication improvements .....	8	v
<b>II. PRESCRIBED LOAD ALLOWANCE</b> .....		vi
<b>III. REPAIR PARTS FOR ORGANIZATIONAL MAINTENANCE</b>		
Group 01. Engine		
0100 Engine assembly .....		1
0101 Crankcase, block, cylinder head .....		1
0105 Valves, camshafts and timing system .....		1
0106 Engine lubrication system .....		1
0107 Engine starting system .....		2
03. Fuel System		
0301 Carburetor .....		2
0304 Air cleaner .....		2
0306 Tanks, lines, fittings, headers .....		3
0308 Engine speed governor and controls .....		3
0309 Fuel filters .....		4
04. Exhaust System		
0401 Muffler and pipes .....		4
05. Cooling System		
0502 Cowling, deflectors, air ducts, shrouds .....		4
06. Electrical System		
0605 Ignition components .....		4
15. Frame, Towing Attachments, and Drawbar		
1501 Frame assembly .....		5
18. Body, Cab, Hood and Hull		
1808 Boxes, carrying case .....		6
22. Body chassis or hull, and accessory items		
2202 Accessory items .....		6
2210 Data plates and instruction holders .....		6
55. Pumps		
5500 Pump assembly .....		7
5505 Suction and/or discharge assembly .....		7

	Page
<b>SECTION IV. REPAIR PARTS FOR DS, GS, AND DEPOT MAINTENANCE</b>	
Group 01. Engine	
0100 Engine assembly .....	9
0101 Crankcase, block, cylinder head .....	9
0102 Crankshaft .....	10
0103 Flywheel assembly .....	10
0104 Pistons, connecting rods .....	10
0105 Valves, camshafts and timing system .....	12
0106 Engine lubrication system .....	12
0107 Engine starting system .....	13
03. Fuel System	
0301 Carburetor .....	13
0304 Air cleaner .....	13
0306 Tanks, lines, fittings, headers .....	14
0308 Engine speed governor and controls .....	16
0309 Fuel filters .....	15
04. ExhaustSystem	
0401 Muffler and pipes .....	15
05. Cooling System	
0502 Cowling, deflectors, air ducts, shrouds .....	16
06. Electrical System	
0605 Ignition components .....	16
15. Frame, towing Attachments, and Drawbars	
1501 Frame assembly .....	17
.18. Body, Cab, Hood and Hull	
1808 Boxes, carrying case .....	18
22. Body Chassis or Hull, and Accessory Items	
2202 Accessory items .....	18
2210 Data plates and instruction holders .....	18
55. Pumps	
5500 Pump assembly .....	19
5501 Shafts, rotors, impellers .....	19
5505 Suction and/or discharge assembly .....	19
95. General Use Standardized Parts	
9501 Bulk material .....	20
<b>SECTION V. FEDERAL STOCK NUMBER AND PART NUMBER INDEX</b>	<b>40</b>

## SECTION I

### INTRODUCTION

#### 1. Scope

This manual contains a list of repair parts required for the performance of organizational, direct support, general support, and depot maintenance of the pump.

#### 2. General

This repair parts list is divided into four principal sections and a Federal stock number index.

*a.* Section II, Prescribed Load Allowance List (PLA), is a consolidated listing of repair parts quantitatively allocated for initial stockage at the organizational level. This is a mandatory minimum stockage allowance.

*b.* Section III, Repair Parts List, is a list of repair parts authorized for the performance of maintenance at the organizational level. No special tools are required for this end item

*c.* Section IV, Repair Parts List, is a list of repair parts authorized for the performance of maintenance at the direct support, general support, and depot level.

*d.* Section V, Federal Stock Number and Manufacturer's Part Number Index, is an index of Federal stock numbers and manufacturer's part numbers to page and manufacturer's codes.

#### 3. Explanation of Columns

The following provides an explanation of columns in the tabular lists.

*a.* Source, Maintenance, and Recoverability Codes.

- (1) Source Code indicates the selection status and source for the listed item. Source codes used are:

Code	Explanation
P	Applied to repair parts which are stocked in or supplied from DSA/GSA or Army supply system, and authorized for use at indicated maintenance categories.
x 1	Applied to repair parts which are not procured or stocked, the requirement for which will be supplied by use of the next higher assembly or components.
x2	Applied to repair parts which are not stocked. The indicated maintenance category requiring such repair parts will attempt to obtain them through cannibalization; if not obtainable through cannibalization, such repair parts will be requisitioned with supporting justification through normal supply channels. <i>Note.</i> Source code is not shown on common hardware items known to be readily available in Army supply channels and through local procurement.

- (2) Maintenance Code indicates the lowest category of maintenance authorized to install the listed item. The maintenance level codes are:

Code	Explanation
O	Organizational maintenance
F	Direct support maintenance
H	General support maintenance
D	Depot maintenance

- (3) Recoverability Code indicates whether unserviceable items should be returned for recovery or salvage. Items not coded are expendable. Recoverability code is:

Code	Explanation
R	Applied to repair parts and assemblies which are economically repairable at DSU and GSU activities and normally are furnished by supply on an exchange basis.

b. Federal Stock Number indicates the Federal stock number for the item.

c. Description column indicates the Federal item name and brief description of the item. A five-digit manufacturer's or other service code is shown followed by the manufacturer's part number. Repair parts quantities included in kits, sets, and assemblies that differ from the actual quantity used in the specific item, are listed in parentheses following the repair part name.

d. Unit of Issue indicates the unit used as a basis of issue, e.g., ea, pr, ft, yd, etc.

e. Quantity Incorporated in Unit Pack indicates the actual quantity contained in the unit pack.

f. Quantity Incorporated in Unit indicates the actual number of parts used in the application. A zero is shown when components of kits or sets are listed that are not applicable to the specific end item.

g. Fifteen-Day Organizational Maintenance Allowance.

- (1) The allowance columns are divided into four subcolumns. Indicated in each subcolumn is the quantity of items authorized for the number of equipments supported. Items authorized for use as required but not for initial stockage are identified with an asterisk in the allowance column.
- (2) The quantitative allowances for organizational level of maintenance represents one initial prescribed load for a 15-day period for the number of equipments supported. Units and organizations authorized additional prescribed loads will multiply the number of prescribed loads authorized by the quantity of repair parts reflected in the appropriate density column to obtain the total quantity of repair parts authorized.
- (3) Items identified by an asterisk may be requisitioned as required. Subsequent changes and/or additions to allowances will be limited to the provisions of AR 735-35. The range of items authorized will be made by this Command based upon engineering ex-

perience, demand data, or TAERS information.

- (4) Allowances are based on 1,000 hours of operation per year.

h. Thirty-Day DS/GS Maintenance Allowance.

- (1) The allowance columns are divided into three subcolumns. Indicated in each subcolumn is the quantity of items authorized for a number of equipments supported. Items authorized for use as required but not for initial stockage are identified with an asterisk in the allowance column.
- (2) The quantitative allowances for DS/GS levels of maintenance will represent initial stockage for a 30-day period for the number of equipments supported.

i. One-Year Allowances Per 100 Equipments/Contingency Planning Purposes indicates the quantity of items required for distribution and contingency planning purposes.

j. Depot Maintenance Allowance Per 100 Equipments indicates the total quantity of items recommended for depot maintenance of 100 equipments. Items recommended for immediate use only are identified with an asterisk in the allowance column.

k. Illustration.

- (1) Figure Number indicates the figure number of the illustration in which the item is shown.
- (2) Item or Symbol Number indicates the callout number used to reference the item in the illustration.

#### 4. Special Information

The following publications pertain to the pump and its components.

TM 5-4320- 237-15	Operator, Organizational, Direct and General Support and Depot Maintenance Manual
LO 54320- 237-15	Lubrication Order



SECTION II

PRESCRIBED LOAD ALLOWANCE

(1) FEDERAL STOCK NUMBER	(2) DESCRIPTION	(3) 15-DAY ORG MAINT ALW			
		(A) 1-5	(B) 6-20	(C) 21-50	(D) 51-100
2805-912-4316	0100-ENGINE ASSEMBLY GASKET SET: ENGINE OVERHAUL (66289) Q2B 0101-CRANKCASE, BLOCK, CYLINDER HEAD	2	2	4	8
5306-206-4344	SCREW, HEXAGON HEAD: CYLINDER HEAD MTG (66289) XD23	*	*	2	2
2805-919-3099	GASKET: CYLINDER HEAD MTG (66289) QD802	*	*	*	2
2805-919-3602	0106-ENGINE LUBRICATION SYSTEM GASKET:GAGE-CAP (66289) QD715	*	2	2	3
2990-718-6022	0107-ENGINE STARTING SYSTEM ROPE,STARTER (66289) U268B	2	4	8	17
2910-594-9067	0301-CARBURETOR GASKET KIT (79960) C181-296	*	2	2	3
2910-358-4516	CARBURETOR (79960) 11193A	*	2	2	4
2910-239-1471	GASKET: CARBURETOR MTG (66289) QC53	*	*	*	2
2910-428-6047	0306-TANKS,LINES,FITTINGS,HEADERS CAP,TANK (05748) 18329SA	*	2	2	4
2910-447-9287	LINE ASSEMBLY,FUEL: STAINER TO CARBURETOR (66289) RP902	*	2	2	4
	0309-FUEL FILTERS				
2910-269-7126	BOWL, GLASS (79480) OW363	2	2	4	8
5330-187-2962	GASKET;BOWL (78480) 06096	2	2	4	8
2910-142-2738	SCREEN, FILTER (79480) OW352	*	*	*	2
2990-840-8817	0401 MUFFLER AND PIPES ARRESTOR, SPARK (04147) 1610-30	*	2	2	4
2990-989-3274	PIPING,EXHAUST (81337) 02-5-14-1285	*	*	*	2
2920-015-6244	0605-IGNITION COMPONENTS MANGETO (82796) FMXDE1B7S1	*	*	*	2
2920-523-8602	GASKET (82796) K2498	*	2	2	3
2920-319-5055	POINT SET (82796) A2437A	2	2	4	8



(1) FEDERAL STOCK NUMBER	(2) DESCRIPTION	(3) 15-DAY ORG MAINT ALW			
		(A) 1-5	(B) 6-20	(C) 21-50	(D) 51-100
2920-354-0750	0605-IGNITION COMPONENTS (CONT'D) WICK, CAM (82796)G2788	*	2	2	3
2920-810-7082	SPARK PLUG (96906) MS51009-1 5500-PUMP ASSEMBLY	2	4	8	17
4320-360-0597	SEAL (05748) 8022	*	2	2	4
4320-360-0601	GASKET SET (05748) 8121SA	*	2	2	4
4320-360-0602	SHIM SET (05748) 8139A	*	2	2	4
	5505-SUCTION AND/OR DISCHARGE ASSEMBLY				
4720-303-4984	HOSE ASSEMBLY, DISCHARGE (81337) 00-5-14-1293 ITEM 8	*	*	*	2
4320-360-0947	CLAMP, HOSE (81337) 00-5-14-1293 ITEM 8-6	*	*	*	2
4730-360-0591	COUPLING, HOSE (96906) MS270-25-9	*	*	*	2
4730-360-0592	COUPLING, HOSE (96906) MS27021-9	*	*	*	2
4730-555-8325	HOSE, ASSEMBLY (81337) 00-5-15-1294 ITEM 7	*	*	*	2
4320-360-0947	CLAMP, HOSE (81337) 00-5-14-1293 ITEM 8-6	*	*	*	2
4730-360-0592	COUPLING, HOSE (96906) MS27021-9	*	*	*	2
4730-360-0591	COUPLING, HOSE (96906) MS27025-9	*	*	*	2



LINE NO.	(1) SOURCE, MAINT. AND RECOV. CODE		(2) FEDERAL STOCK NUMBER	(3) DESCRIPTION	(4) MANUFACTURER'S CODE PART NUMBER		(5) UNIT OF ISSUE	(6) QTY INC IN		(7) 15 DAY ORG. MAINT. ALW.				(8) ILLUS-TRATION	
	(A)	(B)			(C)	IN		UNIT	(A)	(B)	(C)	(D)	(A)	(B)	
	SOURCE	MAINT.			RECOV.	NUMBER		ISSUE	UNIT	PACK	IN UNIT	1-5	6-20	21-50	51-100
0001				SECTION III - REPAIR PARTS FOR ORGANIZATIONAL MAINTENANCE											
0001A				GROUP 01 - ENGINE											
0001B				0100 - ENGINE ASSEMBLY											
0002	P	O	R	2805-839-6105	ENGINE, GASOLINE: WISCONSIN MODEL	66289	279315	EA	1	*	*	*	*		
					MBKIND	66289	Q2B	EA	1	2	2	4	8		
0003	P	O		2805-912-4316	GASKET SET: ENGINE OVERHAUL	66289	QC53	EA	1	SEE GRP	0301				
0005	P	O		2910-239-1471	GASKET: CARBURETOR MTG	66289	QD802	EA	1	SEE GRP	0101				
0006	P	O		2805-919-3099	GASKET: CYLINDER HEAD MTG	66289	QD571	EA	1	SEE GRP	0308				
0007	X1			5330-285-5061	GASKET: GOVERNOR BRACKET	66289	QD570A	EA	1	SEE GRP	0605				
0008	P	O		2920-047-4530	GASKET: MAGNETO MTG	66289	QD572	EA	1	SEE GRP	0105				
0012	X1			2805-268-3448	GASKET: VALVE INSPECTION PLATE	66289		EA	4	*	*	*	*	2	11
0013		O		5310-260-7924	NUT, PLAIN, HEXAGON: ENGINE MTG			EA	4	*	*	*	*	2	17
0014		O		5305-012-2181	SCREW, CAP, HEXAGON HEAD: ENGINE MTG			EA	4	*	*	*	*	2	12
0015		O		5310-261-7340	WASHER, LOCK: ENGINE MTG			EA	4	*	*	*	*	2	12
0016					0101 - CRANKCASE, BLOCK, CYLINDER HEAD										
0019	X2	O			PLUG, PIPE: TIMING HOLE	66289	PF25	EA	1	*	*	*	*	2	13
0020	X2	O		5307-286-0334	STUD, PLAIN: CARBURETOR MTG	66289	PC368	EA	2	*	*	*	*	2	28
0021	P	O		2805-837-1182	CYLINDER HEAD	66289	AB99TISI	EA	1	*	*	*	*	2	7
0022	P	O		2805-919-3099	GASKET: CYLINDER HEAD MTG	66289	QD802	EA	1	*	*	*	*	2	8
					(COMPONENT OF GASKET SET, STOCK NO. 2805-912-4316, SEE GROUP 0100)										
0023	X2	O		5305-499-9608	SCREW, CAP, HEXAGON HEAD: CYLINDER HEAD MTG	66289	XD19	EA	5	*	*	*	*	2	5
0024	P	O		5306-206-4344	SCREW, HEXAGON HEAD: CYLINDER HEAD MTG	66289	XD23	EA	3	*	*	2	2	2	2
0024A	X2	O			WASHER, FLAT: CYLINDER HEAD MTG	05748	PH77	EA	7	*	*	*	*	2	6
0024B	X2	O			WASHER, LOCK: FUEL TANK BRACKET TO CYLINDER HEAD	05748	PE4	EA	1	*	*	*	*	2	3
0088					0105 - VALVES, CAMSHAFTS AND TIMING SYSTEM										
0099	X2	O		2805-376-0416	PLATE, INSPECTION: VALVE	66289	SA61	EA	1	*	*	*	*	2	36
0102	X2	O			SCREW, CAP, HEXAGON HEAD: VALVE INSPECTION PLATE	66289	XD11	EA	1	*	*	*	*	2	32
0108	X2	O			WASHER, FLAT: VALVE INSPECTION PLATE	66289	PH30	EA	1	*	*	*	*	2	31
0109					0106 - ENGINE LUBRICATION SYSTEM										
0111	P	O		2805-790-7778	BREATHER	66289	L031B	EA	1	*	*	*	*	2	27
0112	X2	O		6680-790-6346	GAGE ASSEMBLY, FILLER-OIL	66289	RL23-2	EA	1	*	*	*	*	2	10

LINE NO.	(1) SOURCE, MAINT. AND RECOV. CODE (A) (B) (C)		(2) FEDERAL STOCK NUMBER	(3) DESCRIPTION	(4) MANUFACTURER'S CODE PART NUMBER		(5) UNIT OF ISSUE	(6) QTY INC IN UNIT	(7) 15 DAY ORG. MAINT. ALW. (A) (B) (C) (D)				(8) ILLUS-TRATION (A) (B) FIG. ITEM OR NO. SYM. NO.		
	SOURCE	MAINT.			RECOV.	QTY INC IN UNIT			QTY INC IN UNIT	1-5	6-20	21-50	51-100	NO.	SYM. NO.
0113	X1		4510-193-3101	BODY	66289	RB86	EA	1							
0114	X1		2805-697-7823	GAGE AND CAP ASSEMBLY	66289	RJ152-2SI	EA	1							
0115	P	0	2805-919-3602	GASKET: GAGE AND CAP	66289	QD715	EA	1	*	2	2	3			
0117	X2	0		PLUG, PIKE: OIL DRAIN	66289	XK3B	EA	1	*	*	*	*	2	15	
0132	P	0	5315-273-7846	SCREW, SPRING	66289	PI121	EA	2	*	*	*	*	4	13	
0137				0107 - ENGINE STARTING SYSTEM											
0138	P	0	2990-718-6022	ROPE, STARTER	66289	U268B	EA	1	2	4	8	17	6	6	
0139	P	0	2990-422-6161	SHEAVE, STARTER	66289	UC103A	EA	1	*	*	*	*	6	4	
0140	X2	0		WASHER, LOCK: SHEAVE MTG	66289	PE37A	EA	1	*	*	*	*	6	5	
0141				GROUP 03 - FUEL SYSTEM											
0141A				0301 - CARBURETOR											
0142	P	0	R 2910-358-4516	CARBURETOR	79960	11193A	EA	1	*	2	2	4	2	25	
0143	P	0	2910-239-1471	GASKET: CARBURETOR MTG (COMPONENT OF GASKET SET, STOCK NO. 2805-912-4316, SEE GROUP 0100)	66289	QC53	EA	1	*	*	*	2	2	29	
0144	P	0	2910-594-9067	GASKET KIT	79960	C181-296	EA	1	*	2	2	3			
0145	X1		2910-329-0149	GASKET: BOWL	79960	C142-55	EA	1							
0146	X1		2910-239-1471	GASKET: FLANGE	79960	C141-4-17	EA	1							
0147	X2	0		NUT, PLAIN, HEXAGON: CARBURETOR MTG	66289	PD9	EA	2	*	*	*	*	2	26	
0148	X2	0	2910-672-1914	WASHER, LOCK	66289	PE37A	EA	2	*	*	*	*	2	26	
0149				0304 - AIR CLEANER											
0150	P	0	2940-675-5751	BRACKET ASSEMBLY	66289	B1-264BSI	EA	1	*	*	*	*	2	22	
0151	P	0	2910-447-9260	GASKET: BRACKET MTG	66289	QD647	EA	1	*	*	*	*	2	23	
0152	X2	0		SCREW, MAHCINE: BRACKET CLAMPING	66289	XB20	EA	1	*	*	*	*	2	24	
0153	P	0	2940-839-6107	FILTER ASSEMBLY, AIR	80749	N76B4	EA	1	*	*	*	*			
0154	X1			BAFFLE	80749	417A1K10	EA	1							
0155	X1			BAIL	80749	229B7K01	EA	1							
0156	X1			BODY	80749	1316BIK01	EA	1					2	21	
0157	X1			CUP, OIL	80749	1317B1	EA	1					2	20	
0158	X1			DECAL	80749	A6339	EA	1							
0159	X1		2940-423-3292	PASTENER	80749	B6331	EA	1							
0160	X2	0		SCREW, CAP HEXAGON HEAD: AIR CLEANER TO STRAP	66289	XD6	EA	1	*	*	*	*	2	34	
0161	X2	0		STRAP, SUPPORT	66289	FG338	EA	1	*	*	*	*	2	33	
0162	X2	0		WASHER, LOCK: AIR CLEANER TO STRAP	66289	PE3	EA	1	*	*	*	*	2	35	

LINE NO.	(1) SOURCE, MAINT. AND RECOV. CODE (A) (B) (C)		(2) FEDERAL STOCK NUMBER	(3) DESCRIPTION	(4) MANUFACTURER'S CODE PART NUMBER		(5) UNIT OF ISSUE	(6) QTY INC IN UNIT	(7) 15 DAY ORG. MAINT. ALW. (A) (B) (C) (D)				(8) ILLUS-TRATION (A) (B) FIG. ITEM OR NO. SYM. NO.			
	SOURCE	MAINT.			RECOV.	MANUFACTURER'S CODE			PART NUMBER	1-5	6-20	21-50	51-100	NO.	SYM.	NO.
0163				0306 - TANKS, LINES, FITTINGS, HEADERS												
0164	X2	0		BRACKET, TANK	66289	BK97	EA	1	*	*	*	*	1	12		
0165	X2	0		ELBOW: FUEL LINE TO STRAINER	05748	RF1225	EA	2	*	*	*	*	1	7		
0166	X2	0		FUEL TANK ASSEMBLY	05748	28008SA	EA	1	*	*	*	*				
0167	P	0	2910-429-6047	CAP, TANK	05748	18329SA	EA	1	*	2	2	4	1	3		
0168	X2	0		CHAIN, CAP	05748	18328	EA	1	*	*	*	*				
0169	X2	0		FUEL TANK	05748	28044	EA	1	*	*	*	*	1	5		
0170	P	0	2910-841-8938	STRAINER	05748	18327	EA	1	*	*	*	*	1	4		
0171	P	0	2910-447-9287	LINE ASSEMBLY, FUEL: STRAINER TO CARBURETOR	66289	RP902	EA	1	*	2	2	4	1	8		
0172	X2	0		NUT, PLAIN, HEXAGON: FUEL TANK STRAP	05748	PD77	EA	2	*	*	*	*	1	14		
0173	X2	0	4730-288-8571	PLUG, PIPE: FUEL TANK DRAIN			EA	1	*	*	*	*	1	13		
0174	X2	0		SCREW, CAP, HEXAGON HEAD: FUEL TANK BRACKET MTG, 3/8-16 X 3/4 IN. LG	05748	XD25	EA	2	*	*	*	*	1	9		
0175	X2	0		SCREW, MACHINE, ROUND HEAD: FUEL TANK STRAP	05748	XA52	EA	2	*	*	*	*	1	1		
0176	X2	0		STAND PIPE: FUEL TANK	66289	RML280A	EA	1	*	*	*	*	1	11		
0177	X2	0	2910-672-1914	STRAP, FUEL TANK	66289	PG733	EA	2	*	*	*	*	1	2		
0178	X2	0		WASHER, LOCK: FUEL TANK BRACKET MTG	05748	PE5	EA	2	*	*	*	*	1	10		
0179	X2	0		WASHER, LOCK: FUEL TANK STRAP	05748	PE3	EA	2	*	*	*	*	1	15		
0180				0308-ENGINE SPEED GOVERNOR AND CONTROLS												
0182	P	0	2990-383-9339	CONTROL ASSEMBLY	66289	VE363A	EA	1	*	*	*	*	7	1		
0183	X2	0	2990-536-2962	BLOCK, SWIVEL	66289	TC301-3	EA	1	*	*	*	*	7	13		
0184	X2	0	2990-353-5961	BRACKET, CONTROL	66289	VC22C	EA	1	*	*	*	*	7	15		
0185	X2	0	2990-424-2835	LEVER, CONTROL	66289	VB112	EA	1	*	*	*	*	7	16		
0185A	X2	0		NUT, PLAIN, HEXAGON: GOVERNORS SPRING ADJUSTING	66289	PD151	EA	2	*	*	*	*	7	4		
0185B	X2	0		NUT, PLAIN, HEXAGON: SUPPORT BRACKET MOUNTING	66289	PD153	EA	1	*	*	*	*	7	14		
0185C	X2	0		PIN, COTTER: SPRING RETAINING	66289	X1-1	EA	1	*	*	*	*	7	6		
0186	X2	0	5315-265-9197	PIN, SUPPORT	66289	PC393-2	EA	1	*	*	*	*	7	9		
0186A	X2	0		SCREW, MACHINE: BRACKET MTG	66289	XC14	EA	1	*	*	*	*	7	10		
0186B	X2	0		SCREW: GOVERNOR SPRING ADJUSTING	66289	P1-121	EA	1	*	*	*	*	7	5		
0186C	X2	0		SCREW, CAP, HEXAGON HEAD: SUPPORT BRACKET	66289	XA6	EA	1	*	*	*	*	7	13		
0187	X2	0	5340-256-7147	SPRING, HELICAL	66289	PM117	EA	1	*	*	*	*	7	8		
0187A	X2	0		WASHER: BLOCK MTG	66289	PH253	EA	1	*	*	*	*	7	2		
0187B	X2	0		WASHER: BRACKET MTG	66289	PE55	EA	1	*	*	*	*	7	11		
0187C	X2	0		WASHER, FLAT: SUPPORT BRACKET	66289	QD695	EA	1	*	*	*	*	7	12		
0187D	X2	0		WASHER: SUPPORT PIN MTG	66289	PH84	EA	1	*	*	*	*	7	7		
0190	X2	0	2990-301-6374	LEVER, GOVERNOR	66289	TC332	EA	1	*	*	*	*				
0193	P	0	5306-356-0965	ROD, GOVERNOR	66289	VE304	EA	1	*	*	*	*				

LINE NO.	(1) SOURCE, MAINT. AND RECOV. CODE (A) (B) (C) SOURCE MAINT. RECOV.			(2) FEDERAL STOCK NUMBER	(3) DESCRIPTION	(4) MANUFACTURER'S CODE PART NUMBER		(5) UNIT OF IN ISSUE	(6) QTY INC IN UNIT	(7) 15 DAY ORG. MAINT. ALW. (A) (B) (C) (D)				(8) ILLUS-TRATION (A) (B) FIG. ITEM OR SYM. NO.	
0197	P	0		2990-224-8188	SPRING, GOVERNOR	66289	PM74	EA	1	*	*	*	*		
0199					0309 - FUEL FILTERS										
0200	P	0		2910-202-8795	STRAINER ASSEMBLY	78480	0W418T	EA	1	*	*	*	*	1	6
0201	P	0		2910-269-7126	BOWL, GLASS COVER	78480	0W363	EA	1	2	2	4	8		
0202	X1					78480	0W361	EA	1						
0203	P	0		5330-187-2962	GASKET: BOWL PACKING, NEEDLE VALVE	78480	06096	EA	1	2	2	4	8		
0204	X1					78480	07769	EA	1						
0205	P	0		2910-142-2738	SCREEN, FILTER	78480	0W352	EA	1	*	*	*	2		
0206	X1			2540-703-9134	VALVE	78480	0W432	EA	1						
0207	P	0		2910-382-8768	WIRE AND NUT ASSEMBLY	78480	0W447	EA	1	*	*	*	*		
0208					GROUP 04 - EXHAUST SYSTEM										
0208A					0401 - MUFFLER AND PIPES										
0209	P	0		2990-840-8817	ARRESTOR, SPARK	04147	1610-30	EA	1	*	2	2	4	15	1
0210	P	0		2990-989-3247	PIPING, EXHAUST	81337	02-5-14-1285	EA	1	*	*	*	2		
0211		0		4730-254-1802	ELBOW, STREET: 90 DEG, 1 IN. NPT MUFFLER MTG			EA	1	*	*	*	*	15	3
0212		0		4730-265-6907	NIPPLE, PIPE, CLOSE: 1 IN NPT MUFFLER MTG			EA	1	*	*	*	*	15	2
0213					GROUP 05- COLLING SYSTEM										
0213A					0502 - COWLING, DEFLECTORS, AIR DUCTS, SHROUDS										
0214	X2	0			SCREW, CAP, HEXAGON HEAD: SHROUD MTG	66289	XA34	EA	2	*	*	*	*	6	7
0215	P	0		2930-839-6109	SHROUD ASSEMBLY	66289	SE53A16S1	EA	1	*	*	*	*		
0216	P	0		2930-839-6111	SCREEN: SHROUD	66289	SE153	EA	1	*	*	*	*	6	3
0217	P	0		2930-384-8486	SHROUD	66289	SE54	EA	1	*	*	*	*	6	2
0218	X2	0			WASHER, LOCK: SHROUD MTG	66289	PE3	EA	2	*	*	*	*	6	8
0219					GROUP 06 - ELECTRICAL SYSTEM										
0219A					0605 - IGNITION COMPONENTS										
0220	P	0		2920-047-4530	GASKET: MAGNETO MTG (COMPONENT OF GASKET SET, STOCK NO. 2805-912-4316, SEE GROUP 0100)	66289	QD570A	EA	1	*	*	*	2		
0221	P	0		2805-672-9510	GEAR, MAGNETO	66289	GD87C	EA	1	*	*	*	*		
0222	P	0	R	2920-015-6244	MAGNETO	82796	FMXDE1B7S1	EA	1	*	*	*	2	3	
0229	X2	0		2920-714-5869	COVER, VENT	82796	B6030A	EA	2	*	*	*	*	3	34
0230	P	0		2920-523-8602	GASKET	82796	K2498	EA	1	*	2	2	3	3	42

LINE NO.	(1) SOURCE, MAINT. AND RECOV.			(2) FEDERAL STOCK NUMBER	(3) DESCRIPTION	(4) MANUFACTURER'S CODE	(5) PART NUMBER	(6) UNIT OF IN ISSUE	(7) QTY INC	15 DAY ORG. MAINT. ALW.				(8) ILLUS-TRATION	
	(A) SOURCE	(B) MAINT.	(C) RECOV.							(A) 1-5	(B) 6-20	(C) 21-50	(D) 51-100	(A) FIG. NO.	(B) ITEM OR SYM. NO.
0232	P	O		2920-939-9834	OUTLET, CABLE	82796	AX2474	EA	1	*	*	*	*	3	4
0235	P	O		2920-319-5055	PIONT SET	82796	A2437A	EA	1	2	2	4	8	3	8
0237	X2	0			RING, SNAP: CONTACT RETAINING	82796	C1498G	EA	1	*	*	*	*	3	7
0239	X2	0		2920-714-5868	SCREEN, VENT	82796	C6032B	EA	2	*	*	*	*	3	33
0246	P	0		2920-354-0750	WICK, CAM	82796	G2788	EA	1	*	2	2	3	3	44
0254	P	0		2920-849-2138	CAP	82796	MY2430A	EA	1	*	*	*	*	3	41
0255	P	0		2910-840-8811	CAPACITOR	82796	QX2433	EA	1	*	*	*	*	3	2
0256	P	0		2920-349-3887	COIL	82796	T2477C	EA	1	*	*	*	*	3	16
0258	P	0		2920-839-6106	PACKING, PREFORMED: CAPACITOR MTG	82796	P2473	EA	1	*	*	*	*	3	33
0259	X1				PLATE, IDENTIFICATION	82796	N195	EA	1						
0261		O		5305-042-0463	SCREW, ASSEMBLED WASHER: CAM WICK										
					MTG AND BEARING SUPPORT MTG			EA	5	*	*	*	*	3*10	
0262		0		5305-281-6387	SCREW, ASSEMBLED WASHER: COVER MTG			EA	4	*	*	*	*	3	40
0263		0		5305-655-9502	SCREW, ASSEMBLED WASHER: TERMINAL										
					SCREW AND CAPACITOR			EA	4	*	*	*	*	3	1
0265		0		5305-042-0465	SCREW, MACHINE: CABLE OUTLET MTG			EA	2	*	*	*	*	3	6
0267		0		5310-262-2998	WASHER, FLAT: CAM WICK AND CONTACT										
					SET MTG			EA	1	*	*	*	*	3	43
0268		0		5310-655-6369	WASHER, FLAT: CONTACT MTG			EA	1	*	*	*	*	3	9
0269		0		5310-010-6496	WASHER, LOCK: CABLE OUTLET MTG			EA	2	*	*	*	*	3	5
0270	X2	0			NUT, PLAIN, HEXAGON: MAGNETO MTG	66289	PD10	EA	1	*	*	*	*		
0271		0		5306-207-9138	SCREW, CAP, HEXAGON HEAD: MAGNETO MTG	66289	PB164	EA	1	*	*	*	*		
0272	X2	0			SCREW, CAP, HEAXGON HEAD: MAGNETO MTG	66289	XD17	EA	1	*	*	*	*		
0273	P	0		2920-810-7082	SPARK PLUG	96906	MS51009-1	EA	1	2	4	8	17	2	4
0274	X2	0			EASHER, LOCK: MAGNETO MTG	66289	PE52A	EA	3	*	*	*	*		
0275	P	0		2920-839-6113	WIRE ASSEMBLY, SPARK PLUG	66289	YD300A	EA	1	*	*	*	2	1	
0276					GROUP 15 - FRAME, TOWING ATTACHMENTS, AND DRAWBAR										
0276A					1501 - FRAME ASSEMBLY										
0277	X2	0			BASE	05748	00-5-14-1286	EA	1	*	*	*	*	11	4
0278	X2	0			BUMPER			EA	2	*	*	*	*	12	3
					(81337) 01-5-14-1284ITEM2-8										
0279	X2	0			GRIP, HANDLE			EA	2	*	*	*	*	12	6
					(81337) 01-5-14-1284ITEM2-7										
0280	X2	0			HANDLE, CARRYING			EA	1	*	*	*	*	12	1
					(81337) 02-5-14-12ITEM2-1										
0281		0		5310-208-4764	NUT, PLAIN, HEXAGON: BUMPER MTG			EA	2	*	*	*	*	12	5
0282		0		5305-058-3888	SCREW, MACHINE: BUMPER MTG			EA	2	*	*	*	*	12	2
0283		0		5310-010-6496	WASHER, LOCK: BUMPER MTG			EA	2	*	*	*	*	12	4

LINE NO.	(1) SOURCE, MAINT. AND RECOV. CODE		(2) FEDERAL STOCK NUMBER	(3) DESCRIPTION	(4) MANUFACTURER'S CODE PART NUMBER		(5) UNIT OF ISSUE	(6) QTY INC IN UNIT	(7) 15 DAY ORG. MAINT. ALW.				(8) ILLUS-TRATION (A) (B)		
	(A)	(B)			(C)	(A)			(B)	(C)	(D)	FIG. NO.	ITEM OR SYM. NO.		
	SOURCE	MAINT.			RECOV.	1-5			6-20	21-50	51-100				
0284				GROUP 18 - BODY, CAB, HOOD AND HULL											
0284A				1808 - BOXES, CARRYING CASE											
0285	X2	0	4940-672-4764	BOX ASSEMBLY (81337) 00-5-14-1288ITEM3			EA	1	*	*	*	*			
0286	X2	0		BOX LESS COVERS (81337) 00-5-14-1288ITEM3-23			EA	1	*	*	*	*			
0287	X2	0		HANDLER (81337) 00-5-14-1288ITEM3-35			EA	4	*	*	*	*			
0288	X2	0		COVER: LH (81337) 00-5-14-1289ITEM3-1			EA	1	*	*	*	*			
0289	X2	0		COVER: RH (81337) 00-5-14-1289ITEM3-13			EA	1	*	*	*	*			
0290	X2	0		BOX, TOOL, NUMBER 1	81337	00-5-14-1291	EA	1	*	*	*	*	11	3	
0291	X2	0		BOX, TOOL, NUMBER 2	81337	00-5-14-1292	EA	1	*	*	*	*	11	1	
0292		0	5310-275-5512	NUT, PLAIN, HEXAGON: TOOL BOX MTG			EA	4	*	*	*	*	11	6	
0293		0	5305-637-4028	SCREW, CAP, HEXAGON HEAD: TOOL BOX MTG			EA	4	*	*	*	*	11	2	
0294		0	5310-012-0380	WASHER, LOCK: TOOL BOX MTG			EA	4	*	*	*	*	11	5	
0295				GROUP 22 - BODY CHASSIS OR HULL, AND ACCESSORY ITEMS											
0295A				2202 - ACCESSORY ITEMS											
0296	P	0	5975-577-8825	ROD, GROUND (81337) 02-5-14-1285ITEM2-27			EA	1	*	*	*	*	16	1	
0297	X2	0		WIRE AND FITTINGS	81337	02-5-14-1285	EA	1	*	*	*	*			
0298	P	0	4320-B90-0013	CLAMP (81337) 02-5-14-1285ITEM2-29			EA	1	*	*	*	*	16	4	
0299	P	0	4940-B90-0009	LEAD, ELECTRICAL (81337) 02-5-14-1285ITEM2-30			EA	1	*	*	*	*	16	3	
0300	P	0		TERMINAL, LUG (81337). 02-5-14-1285ITEM2-31			EA	1	*	*	*	*	16	2	
0301				2210 - DATA PLATES AND INSTRUCTION HOLDERS											
0302	X2	0		PLATE, IDENTIFICATION	05748	26650	EA	1	*	*	*	*			
0303	X2	0		PLATE, IDENTIFICATION	05748	27286	EA	1	*	*	*	*			
0304	X2	0		PLATE, INSTRUCTION: ENGINE	66289	SD251	EA	1	*	*	*	*			



LINE NO.	(1) SOURCE, MAINT. AND RECOV. CODE (A) (B) (C)			(2) FEDERAL STOCK NUMBER	(3) DESCRIPTION	(4) MANUFACTURER'S CODE	(5) PART NUMBER	(6) UNIT OF ISSUE	(5) QTY INC IN UNIT	(7) 15 DAY ORG. MAINT. ALW.				(8) ILLUS-TRATION (A) (B)						
	SOURCE	MAINT.	RECOV.							NUMBER	DESCRIPTION	PART NUMBER	UNIT OF ISSUE	QTY INC IN UNIT	(A) 1-5	(B) 6-20	(C) 21-50	(D) 51-100	FIG. NO.	ITEM OR SYM. NO.
0305					GROUP 55 - PUMPS															
0305A					5500 - PUMP ASSEMBLY															
0306		0		5310-260-7924	NUT, PLAIN, HEXAGON: PUMP MTG			EA	2	*	*	*	*	5	15					
0307	X2	0		4320-913-7131	PUMP ASSEMBLY	05748	28001CA	EA	1	*	*	*	*	5						
0309	P	0		4320-360-0601	GASKET SET	05748	8121SA	EA	1	*	2	2	4							
0310	P	0		4320-360-0597	SEAL	05748	8022	EA	1	*	2	2	4	5	7					
0311	X1				GASKET: BODY	05748	8021	EA	1					5	3					
0312	X1				GASKET: BODY	05748	8030	EA	2					5	3					
0313	P	0		4320-360-0602	SHIM SET	05748	8139SA	EA	1	*	2	2	4							
0314	X1				SHIM: .010 THK	05748	8053	EA	2					5	5					
0315	X1				SHIM: .031 THK	05748	8054	EA	1					5	6					
0316	P	0		4320-934-7865	BODY ASSEMBLY: PUMP	05748	28016SA	EA	1	*	*	*	*							
0317	X2	0			BODY	05748	28017	EA	1	*	*	*	*	5	1					
0318	X2	0			BUSHING, REDUCER: PUMP BODY	05748	28021	EA	2	*	*	*	*	5	2					
0319		0		5310-274-7766	NUT, PLAIN, HEXAGON: BODY MTG			EA	6	*	*	*	*	5	12					
0320	X2	0			PLUG, PIPE: BODY DRAIN	05748	3207	EA	1	*	*	*	*	5	18					
0321	X2	0			STUD, PLAIN: PUMP HOUSING, LOWER	05748	2417	EA	4	*	*	*	*	5	14					
0322	X2	0			STUD, PLAIN: PUMP HOUSING, UPPER	05748	2418	EA	2	*	*	*	*	5	8					
0323		0		5310-261-7340	W ASHER, LOCK: BODY MTG			EA	6	*	*	*	*	5	13					
0325		0		5305-550-1310	SCREW, CAP, HEXAGON HEAD: PUMP MTG			EA	2	*	*	*	*	5	17					
0327		0		5310-261-7340	WASHER, LOCK: PUMP MTG			EA	2	*	*	*	*	5	16					
0330					5505 - SUCTION AND/OR DISCHARGE ASSEMBLY															
0331	P	0		5340-825-5317	CAP, DUST	96906	MS27028-9	EA	2	*	*	*	*	14	6					
0332	P	0		4730-980-9411	COUPLING, HALF	96906	MS27024-9	EA	1	*	*	*	*							
0333	P	0	R	4720-303-4984	HOSE ASSEMBLY, DISCHARGE (81337) 00-5-14-1293ITEM8			EA	2	*	*	*	2							
0334	X2	0		5340-825-5317	CAP, DUST	96906	MS27028-9	EA	2	*	*	*	*	14	6					
0335	P	0		4320-360-0947	CLAMP, HOSE (81337) 00-5-14-1293ITEM8-6			EA	8	*	*	*	2	14	4					
0336	P	0		4730-360-0591	COUPLING, HOSE, FEMALE	96906	MS27025-9	EA	2	*	*	*	2	14	8					
0337	P	0		4730-360-0592	COUPLING, HOSE, MALE	96906	MS27021-9	EA	2	*	*	*	2	14	3					
0339	X2	0		5340-823-5316	PLUG, DUST	96906	MS27029-9	EA	2	*	*	*	*	14	9					
0340	P	0	R	4730-555-8325	HOSE ASSEMBLY, SUCTION (81337) 00-5-14-1293ITEM7			EA	2	*	*	*	2							
0341	X2	0		5340-823-5317	CAP, DUST	96906	MS27028-9	EA	2	*	*	*	*	14	6					
0342	P	0		4320-360-0947	CLAMP, HOSE (81337) 00-5-14-1293ITEM8-6			EA	8	*	*	*	2	14	4					
0343	P	0		4730-360-0592	COUPLING, HOSE, MALE	96906	MS27021-9	EA	2	*	*	*	2	14	3					
0344	P	0		4730-360-0591	COUPLING, HOSE, FEMALE	96906	MS27025-9	EA	2	*	*	*	2	14	8					
0346	X2	0		5340-823-5316	PLUG, DUST	96906	MS27029-9	EA	2	*	*	*	*	14	9					
0347	P	0		4930-B60-0569	NOZZLE ASSEMBLY (81337) 00-5-14-1293ITEM10			EA	2	*	*	*	*	14	1					

LINE NO.	(1) SOURCE, MAINT. AND RECOV.			(2) FEDERAL STOCK NUMBER	(3) DESCRIPTION	MANUFACTURER'S CODE PART NUMBER	(4) UNIT OF ISSUE	(5)		(6)				(7)		(8) ILLUS- TRATION	
	CODE (A)	(B) MAINT.	(C) RECOV.					QTY INC IN	QTY INC IN UNIT	15 DAY ORG. MAINT. ALW.				(A) FIG. NO.	(B) ITEM OR SYM. NO.		
										(A)	(B)	(C)	(D)				
0348	P	0		4730-203-1010	COUPLING, HALF, FEMALE	96906 MS27026-9	EA		2	*	*	*	*	14	2		
0349	P	0		4930-837-7795	NOZZLE (81337) 00-5-14-1293ITEM10-3		EA		2	*	*	*	*				
0350	X2	0		5340-823-5316	PLUG, DUST	96906 MS27029-9	EA		2	*	*	*	*	14	9		
0351	X2	0		5340-823-5316	PLUG, DUST	96906 MS27029-9	EA		2	*	*	*	*	14	9		
0352	X2	0			TEE: PUMP OUTLET (81337) 00-5-14-1287ITEM2-33		EA		1	*	*	*	*	14	7		
0353	P	0		4320-B90-0014	UNLOADER ASSEMBLY (81337) 02-5-14-6921ITEM		EA		1	*	*	*	*				
0354	P	0		4730-360-0589	ADAPTER	96906 MS27022-9	EA		1	*	*	*	*				
0355	X2	0		5340-823-5317	CAP, DUST	96906 MS27028-9	EA		1	*	*	*	*				
0356	P	0		4730-851-6863	ELBOW (81337) 02-5-14-692ITEM2		EA		1	*	*	*	*				
0357	P	0		4320-B90-0015	SUCTION STUB (81337) 02-5-14-692ITEM1-1		EA		1	*	*	*	*				

LINE NO.	(1) SOURCE, MAINT. AND RECOV.			(2) FEDERAL STOCK NUMBER	(3) DESCRIPTION	(4) MANUFACTURER'S		(5) QTY INC		(6) 30-DAY DS/GS MAINT. ALW.			(7) 1-YR. ALW. PER CTNGCY.		(8) 100 EQUIP. DEPOT MAINT. ALW. PER. 100 EQUIP.		(9) ILLUS-TRATION (A) (B) FIG. ITEM OR NO. SYM. NO.	
	(A)	(B)	(C)			CODE	PART NUMBER	UNIT OF ISSUE	IN	QTY INC IN UNIT	(A)	(B)	(C)	PLANNING			(A)	(B)
	SOURCE	MAINT.	RECOV.															
0001					SECTION IV - REPAIR PARTS FOR DS, GS, AND DEPOT MAINTENANCE													
0001A					GROUP 01 - ENGINE													
0001B					0100 - ENGINE ASSEMBLY													
0002	P	O	R	2805-839-6105	ENGINE, GASOLINE: WISCONSIN MODEL MBKND 279315	66289	279315	EA		1	*	*	2	10		5		
0003	P	O		2805-912-4316	GASKET SET: ENGINE OVERHAUL	66289	Q2B	EA		1	4	8	17	200		100		
0004	X1			2805-376-0398	GASKET: BASE	66289	QD569A	EA		1								
0005	P	O		2910-239-1471	GASKET: CARBURETOR MTG	66289	QC53	EA		1								
0006	P	O		2805-919-3099	GASKET: CYLINDER HEAD MTG	66289	QD802	EA		1								
0007	X1			5330-285-5061	GASKET: GOVERNOR BRACKET	66289	QD571	EA		1								
0008	P	O		2920-047-4530	GASKET: MAGNETO MTG	66289	QD570A	EA		1								
0009	P	F		2805-244-8184	GASKET: MAIN BEARING PLATE, FLYWHEEL END	66289	QD574	EA		1								
0010	P	F		2805-527-7604	GASKET: MAIN BEARING PLATE, TAKE-OFF END	66289	QD573	EA		5								
0011	P	F		5330-298-5170	GASKET: MAIN BEARING PLATE, TAKE-OFF END	66289	QD573A	EA		2								
0012	X1			2805-268-3448	GASKET: VALVE INSPECTION PLATE	66289	QD572	EA		1								
0013		O		5310-260-7924	NUT, PLAIN, HEXAGON: ENGINE MTG			EA		4	*	*	*	*		*	2	11
0014		O		5305-012-2181	SCREW, CAP, HEXAGON HEAD: ENGINE MTG			EA		4	*	*	*	*		*	2	17
0015		O		5310-261-7340	WASHER, LOCK: ENGINE MTG			EA		4	*	*	*	*		*	2	12
0016					0101 - CRANKCASE, BLOCK, CYLINDER HEAD													
0017	P	H		2805-837-1181	CYLINDER AND CRANKCASE ASSEMBLY	66289	AA97-ISI9	EA		1	*	*	*	5		5	2	9
0018	X2	F			PLUG, EXPANSION: CAMSHAFT SUPPORT PIN	66289	SA26	EA		2	*	*	*	*		*		
0019	X2	O			PLUG, PIPE: TIMING HOLE	66289	PF25	EA		1	*	*	*	*		*	2	13
0020	X2	O		5307-286-0334	STUD, PLAIN: CARBURETOR MTG	66289	PC368	EA		2	*	*	*	*		*	2	28
0021	P	O		2805-837-1182	CYLINDER HEAD	66289	AB99TISI	EA		1	*	*	2	6		5	2	7
0022	P	O		2805-919-3099	GASKET: CYLINDER HEAD MTG (COMPONENT OF GASKET SET, STOCK NO. 2805-912-4316, SEE GROUP 0100)	66289	QD802	EA		1	*	2	2	18		100	2	8
0023	X2	O		5305-499-9608	SCREW, CAP, HEXAGON HEAD: CYLINDER HEAD MTG	66289	XD19	EA		5	*	*	*	*		*	2	5
0024	P	O		5306-206-4344	SCREW, HEXAGON HEAD: CYLINDER HEAD MTG	66289	XD23	EA		3	2	2	3	30		10	2	2
0024A	X2	O			WASHER, FLAT: CYLINDER HEAD MTG	05748	PH77	EA		7	*	*	*	*		*	2	6
0024B	X2	O			WASHER, LOCK: FUEL TANK BRACKET TO CYLINDER HEAD	05748	PE4	EA		1	*	*	*	*		*	2	3

LINE NO.	(1) SOURCE, MAINT. AND RECOV.			(2) FEDERAL STOCK NUMBER	(3) DESCRIPTION	(4) MANUFACTURER'S CODE PART NUMBER		(5) UNIT OF ISSUE	(6) QTY INC IN UNIT	(7) 30-DAY DS/GS MAINT. ALW.			(8) 1-YR. ALW. PER 100 EQUIP. CTNGCY. PLANNING	(9) DEPOT MAINT. ALW. PER. 100 EQUIP.	(10) ILLUS-TRATION (A) (B) FIG. ITEM OR NO. SYM. NO.			
	(A) SOURCE	(B) MAINT.	(C) RECOV.			UNIT	PACK			(A)	(B)	(C)			ALW. PER.	ALW. PER.	FIG. NO.	ITEM OR SYM. NO.
0025					0102 - CRANKSHAFT													
0026	P	F		2805-358-2303	CRANKSHAFT ASSEMBLY	66289	CA51-8851	EA	1	*	*	2	10	5	13	10		
0027	P	F		2805-249-9903	GEAR, CRANKSHAFT	66289	GA34A	EA	1	*	*	*	5	3	13	13		
0028	P	F		2805-244-8184	GASKET: MAIN BEARING PLATE, FLYWHEEL END (COMPONENT OF GASKET SET, STOCK NO. 2805-912-4316, SEE GROUP 0100)	66289	QD574	EA	1	*	2	2	18	100	13	14		
0029	P	F		2805-527-7604	GASKET: MAIN BEARING PLATE, TAKE-OFF END (COMPONENT OF GASKET SET, STOCK NO. 2805-912-4316, SEE GROUP 0100)	66289	QD573	EA	5	*	2	2	18	100	13	4		
0030	P	F		5330-298-5170	GASKET: MAIN BEARING PLATE, TAKE-OFF END (COMPONENT OF GASKET SET, STOCK NO. 2805-912-4316, SEE GROUP 0100)	66289	QD573A	EA	2	*	2	2	18	100	13	5		
0031	X2	F			KEY, WOODRUFF: CRANKSHAFT GEAR MTG	66289	PL21	EA	1	*	*	*	*	*	13	11		
0032	P	F		3110-100-6009	BEARING ASSEMBLY: CRANKSHAFT	66289	ME88	EA	2	*	*	2	10	20				
0033	X1			3110-100-3158	CONE, BEARING	60038	15118	EA	1						13	9		
0034	X1			3110-100-0522	CUP, BEARING	60038	15250	EA	1						13	8		
0035	P	F		2805-353-5849	PLATE ASSEMBLY	66289	BG171S1	EA	1	*	2	2	20	100	13	15		
0036	P	F		2805-356-0940	SEAL, OIL	66289	PH256	EA	1	*	2	2	18	100	13	6		
0037	P	F		2805-301-6336	PLATE ASSEMBLY (INCLUDES CAP, STOCK NO. 3110-100-0522)	66289	BG170S2	EA	1	2	3	7	80	100				
0038	X2	H		2805-383-4090	PLATE, BEARING	66289	BG170	EA	1	*	*	*	*	*	13	3		
0039	P	F		2805-391-4152	RETAINER, BEARING	66289	PH254	EA	1	2	3	7	80	100	13	7		
0040	P	F		2805-356-0940	SEAL, OIL	66289	PH256	EA	1	2	3	7	80	100	13	6		
0041	X2	F			SCREW, CAP, HEXAGON HEAD: BEARING PLATE, FLYWHEEL END	66289	XD4	EA	4	*	*	*	*	*	13	17		
0042	X2	F			SCREW, CAP, HEXAGON HEAD: BEARING PLATE, TAKE-OFF END	66289	XD15	EA	4	*	*	*	*	*	13	1		
0043	X2	F			WASHER, LOCK: BEARING PLATE, FLYWHEEL END	66289	PE3	EA	4	*	*	*	*	*	13	16		
0044	X2	F			WASHER, LOCK: BEARING PLATE, TAKE-OFF END	66289	PH412	EA	4	*	*	*	*	*	13	2		
0045					0103 - FLYWHEEL ASSEMBLY													
0046	X2	F		2805-376-0395	FLYWHEEL	66289	NC137	EA	1	*	*	*	*	*	6	1		
0047	X2	F			KEY, WOODRUFF: FLYWHEEL MTG	66289	PL17	EA	1	*	*	*	*	*	13	12		
0048	X2	F			WASHER, LOCK: FLYWHEEL MTG	66289	PE37A	EA	1	*	*	*	*	*				
0049					0104 - PISTONS, CONNECTING RODS													
0050	P	F	R	2805-672-9509	CONNECTING ROD	66289	DA70BS1STD	EA	1	*	*	2	10	50	8	7		
0051	X1				CONNECTING ROD	66289	DA70BSTD	EA	1						8	7		
0052	P	F		5305-049-9608	SCREW, CAP	66289	XD19	EA	2	*	*	2	8	10	8	9		
0053	P	F		5310-290-5759	WASHER, LOCK	66289	PE82	EA	2	2	2	3	40	200	8	8		
0054	X2	F			CONNECTING ROD: .010 UNDERSIZE	66289	DA70BSIO10US	EA	1	*	*	*	*	*	8	7		
0055	X2	F			CONNECTING ROD: .010 UNDERSIZE	66289	DA70B010US	EA	1	*	*	*	*	*	8	7		
0056	X2	F			CONNECTING ROD: .020 UNDERSIZE	66289	DA70BSIO20US	EA	1	*	*	*	*	*	8	7		

LINE NO.	(1) SOURCE, MAINT. AND RECOV.			(2) FEDERAL STOCK NUMBER	(3) DESCRIPTION	(4) MANUFACTURER'S		(5) UNIT OF ISSUE	(6) QTY INC IN UNIT	(7) 30-DAY DS/GS MAINT. ALW.			(8) 1-YR. ALW. PER 100 EQUIP. CTNGCY. PLANNING	(9) DEPOT MAINT. ALW. PER. 100 EQUIP.	(10) ILLUS-TRATION	
	(A) SOURCE	(B) MAINT.	(C) RECOV.			CODE	PART NUMBER			(A) 1-20	(B) 21-50	(C) 51-100			(A) FIG. NO.	(B) ITEM OR SYM. NO.
0057	X2	F			CONNECTING ROD: .020 UNDERSIZE	66289	DA70B020US	EA	1	*	*	*	*	*	8	7
0059	X2	F			CONNECTING ROD: .030 UNDERSIZE	66289	DA70BS1-030US	EA	1	*	*	*	*	*	8	7
0060	X2	F		2805-033-6135	PIN, PISTON	66289	DE68STD	EA	1	*	*	*	*	*	8	4
0061	P	F	R	2805-828-9520	PISTON ASSEMBLY (INCLUDES 1 EACH PIN, STOCK NO. 2805-033-6135 AND 2 EACH RETAINER, STOCK NO. 5340-351-6482)	66289	DB186A1SPSTD	EA	1	*	*	2	10	10	8	6
0062	X2	F			PISTON ASSEMBLY: .005 OVERSIZE (INCLUDES 1 EACH PIN, STOCK NO. 2805-033-6135 AND 2 EACH RETAINER, STOCK NO. 5340-351-6482)	66289	DB186A1SP0050S	EA	1	*	*	*	*	*	8	6
0063	X2	F			PISTON ASSEMBLY: .010 OVERSIZE (INCLUDES 1 EACH PIN, STOCK NO. 2805-033-6135 AND 2 EACH RETAINER, STOCK NO. 5340-351-6482)	66289	DB186A1SP0100S	EA	1	*	*	*	*	*	8	6
0064	X2	F			PISTON ASSEMBLY: .020 OVERSIZE (INCLUDES 1 EACH PIN, STOCK NO. 2805-033-6135 AND 2 EACH RETAINER, STOCK NO. 5340-351-6482)	66289	DB186A1SP0200S	EA	1	*	*	*	*	*	8	6
0065	X2	F			PISTON ASSEMBLY: .030 OVERSIZE (INCLUDES 1 EACH PIN, STOCK NO. 2805-033-6135 AND 2 EACH RETAINER, STOCK NO. 5340-351-6482)	66289	DB186A1SP0300S	EA	1	*	*	*	*	*	8	6
0066	X2	F			PISTON ASSEMBLY (INCLUDES 1 EACH PIN, STOCK NO. 2805-033-6135 AND 2 EACH RETAINER, STOCK NO. 5340-351-6482)	66289	DB186A1SP	EA	1	*	*	*	*	*	8	6
0067	P	F		5340-351-6482	RETAINER, PIN	66289	PK69	EA	2	*	*	*	40	20	8	5
0068	P	F		2805-555-2119	RING SET, PISTON	66289	DR30STD	EA	1	2	3	5	60	10		
0069	X1				RING, COMPRESSION	66289	DC198STD	EA	2						8	1
0070	X1				RING, OIL	66289	DC199STD	EA	1						8	3
0071	X1			2805-560-8750	RING, SCRAPER	66289	DC161-1STD	EA	1						8	2
0072	X2	F		2805-555-2119	RING SET, PISTON	66289	DR30-0100S	EA	1	*	*	*	*	*		
0073	X1				RING, COMPRESSION	66289	DC198-0100S	EA	2						8	1
0074	X1				RING, OIL	66289	DC199-0100S	EA	1						8	3
0075	X1				RING, SCRAPER	66289	DC161-1-0100S	EA	1						8	2
0076	X2	F			RING SET, PISTON	66289	DR30-0300S	EA	1	*	*	*	*	*		
0077	X1				RING, COMPRESSION	66289	DC198-0300S	EA	2						8	1
0078	X1				RING, OIL	66289	DC199-0300S	EA	1						8	3
0079	X1				RING, SCRAPER	66289	DC161-1-0300S	EA	1						8	2
0080	X2	F			RING SET, PISTON	66289	DR30-0200S	EA	1	*	*	*	*	*		
0081	X1				RING, COMPRESSION	66289	DC198-0200S	EA	2						8	1
0082	X1				RING, OIL	66289	DC199-0200S	EA	1						8	3
0083	X1				RING, SCRAPER	66289	DC161-1-0200S	EA	1						8	2
0084	X2	F			RING SET, PISTON	66289	DR30-0050S	EA	1	*	*	*	*	*		
0085	X1				RING, COMPRESSION	66289	DC198-0050S	EA	2						8	1

LINE NO.	(1) SOURCE, MAINT. AND RECOV.			(2) FEDERAL STOCK NUMBER	(3) DESCRIPTION	(4) MANUFACTURER'S CODE	(5) PART NUMBER	(6) UNIT OF ISSUE	(7) QTY INC IN UNIT	(8) 30-DAY DS/GS MAINT. ALW.			(9) 1-YR. ALW. PER 100 EQUIP. CTNGCY. PLANNING	(10) DEPOT MAINT. ALW. PER. 100 EQUIP.	(10) ILLUS-TRATION	
	(A)	(B)	(C)							(A)	(B)					
	SOURCE	MAINT.	RECOV.							FIG. NO.	ITEM OR SYM. NO.					
0086	X1				RING, OIL	66289	DC199-0050S	EA		1					8	3
0087	X1				RING, SCRAPER	66289	DC161-1-0050S	EA		1					8	2
0088					0105 - VALVES, CAMSHAFTS AND TIMING SYSTEM											
0089	P	F		2805-792-9761	CAMSHAFT ASSEMBLY	66289	EA101ZS1	EA		1	*	*	2	10	3	
0090	X1			2805-335-2917	CAMSHAFT	66289	EA101W	EA		1					10	8
0091	X1			2805-335-9218	GEAR	66289	GB49	EA		1					10	7
0092	X1				KEY: CAMSHAFT GEAR	66289	PL21	EA		1					10	6
0093	X1			5315-221-0480	PIN, SUPPORT	66289	PA264	EA		1					10	11
0094	X1			2805-268-3448	GASKET: VALVE INSPECTION PLATE (COMPONENT OF GASKET SET, STOCK NO. 2805-912-4316, SEE GROUP 0100)	66289	QD572	EA		1					2	30
0095	P	F		2805-695-2177	GUIDE, STEM	66289	AD41	EA		2	4	8	17	200	100	
0096	P	F		2805-215-3827	INSERT, SEAT	66289	HG201D	EA		1	*	*	2	10	25	
0097	P	F		2805-620-0156	LOCATOR, SPRING	66289	AG34B	EA		2	2	2	3	40	10	9
0098	P	F		2805-277-2918	LOCK, SEAT	66289	AH9	EA		4	*	2	2	20	40	9
0099	X2	O		2805-376-0416	PLATE, INSPECTION: VALVE	66289	SA61	EA		1	*	*	*	*	*	2
0100	X2	F			PLUG, EXPANSION: CAMSHAFT SUPPORT PIN HOLE	66289	SA26	EA		2	*	*	*	*	*	10
0101	P	F		2805-301-2940	ROTATER AND SPRING SEAT	66289	AG31	EA		1	2	2	3	30	20	9
0102	X2	O			SCREW, CAP, HEXAGON HEAD: VALVE INSPECTION PLATE	66289	XD11	EA		1	*	*	*	*	*	2
0103	P	F		2805-143-6657	SEAT, INLET	66289	AG26	EA		1	*	2	2	20	10	9
0104	P	F		2805-808-5675	SPRING, HELICAL, COMPRESSION	66289	AF43B	EA		2	2	3	7	80	100	9
0105	P	F		2805-776-0512	TAPPET, VALVE	66289	FA42C	EA		2	*	*	2	10	10	9
0106	P	F		2805-448-1050	VALVE, EXHAUST	66289	AE74D	EA		1	*	2	2	20	30	9
0107	P	F		2805-270-3429	VALVE, INLET	66289	AE74C	EA		1	*	2	2	20	20	9
0108	X2	O			WASHER, FLAT: VALVE INSPECTION PLATE	66289	PH30	EA		1	*	*	*	*	*	2
0109					0106 - ENGINE LUBRICATION SYSTEM											
0110	P	F		2805-358-3077	BASE, ENGINE	66289	BB116F9	EA		1	*	*	*	5	*	2
0111	P	O		2805-790-7778	BREATHER	66289	L03TB	EA		1	*	*	2	10	5	2
0112	X2	O		6680-790-6346	GAGE ASSEMBLY, FILLER-OIL	66289	R123-2	EA		1	*	*	*	*	*	2
0113	X1			4510-193-3101	BODY	66289	RB86	EA		1						
0114	X1			2805-697-7823	GAGE AND CAP ASSEMBLY	66289	RJ152-2SI	EA		1						
0115	P	O		2805-919-3602	GASKET: GAGE AND CAP	66289	QD715	EA		1	2	3	5	60	100	
0116	X1			2805-376-0398	GASKET: BASE (COMPONENT OF GASKET SET, STOCK NO. 2805-912-4316, SEE GROUP 0100)	66289	QD569A	EA		1						2
0117	X2	O			PLUG, PIPE: OIL DRAIN	66289	XK3B	EA		1	*	*	*	*	*	2
0118	P	F	R	2805-537-0418	PUMP ASSEMBLY	66289	K98	EA		1	*	*	2	10	5	4

LINE NO.	(1) SOURCE, MAINT. AND RECOV.			(2) FEDERAL STOCK NUMBER	(3) DESCRIPTION	(4) MANUFACTURER'S CODE	(5) PART NUMBER	(6) UNIT OF ISSUE	(7) QTY INC IN UNIT	(8) 30-DAY DS/GS MAINT. ALW.			(9) 1-YR. ALW. PER 100 EQUIP. PLANNING	(10) DEPOT MAINT. ALW. PER. 100 EQUIP.	(11) ILLUS-TRATION (A) (B) (C)			
	(A)	(B)	(C)							(A)	(B)	(C)			(A)	(B)	(C)	
	SOURCE	MAINT.	RECOV.							IN	IN	IN			FIG.	ITEM	OR	
										UNIT	UNIT	UNIT			NO.	SYM.	NO.	
0119	P	F		2805-376-0382	BODY ASSEMBLY	66289	KA59B1S1	EA				2	10	0				
0120	X1				BODY	66289	KA59B1	EA							4		6	
0121	P	F		2805-376-0417	PLUNGER ASSEMBLY	66289	KF14S1	EA				2	10	5				
0122	P	F		2805-695-2186	SEAT	66289	KF30	EA				2	10	5		4	3	
0123	P	F		3110-100-6180	BALL	66289	ME38	EA				*			12		2	
0124	X1			5315-233-8888	PIN	66289	PA217	EA								4	14	
0125	X1				PLUNGER	66289	KF14	EA								4	10	
0126	P	F		2805-447-9294	COVER	66289	SA80	EA				2	10	5		4	11	
0127	P	F		2805-740-0243	RETAINER, BALL	66289	PK50A	EA				*	10	5		4	8	
0128	P	F		5340-147-3745	SPRING	66289	PM58	EA				*	10	50		4	9	
0129	P	F		2805-511-6919	STRAINER	66289	RD107	EA				*	10	5		4	7	
0130	P	F		2805-147-3730	CAP, PUSH ROD	66289	KF19A	EA				*	5	7		4	1	
0131	P	F		2805-376-0419	PUSH ROD	66289	KF22	EA				*	5	7		4	12	
0132	P	O		5315-273-7846	SCREW, SPRING	66289	PI121	EA				*	10	20		4	13	
0133	X2	F			SCREW, CAP, HEXAGON HEAD: ENGINE BASE MTG	66289	XD6	EA				*	*	*		2	18	
0134	X2	F			SCREW, CAP, HEXAGON HEAD: OIL PUMP MTG	66289	XD7	EA				*	*	*			4	
0135	X2	F			WASHER, FLAT: ENGINE BASE MTG	66289	PE3	EA				*	*	*		2	19	
0136	X2	F			WASHER, LOCK: OIL PUMP MTG	66289	PE3	EA				*	*	*		4	5	
0137					0107 - ENGINE STARTING SYSTEM													
0138	P	O		2990-718-6022	ROPE, STARTER	66289	U268B	EA				8	17	33	400	100	6	6
0139	P	O		2990-422-6161	SHEAVE, STARTER	66289	UC103A	EA				*	*	*	5	2	6	4
0140	X2	O			WASHER, LOCK: SHEAVE MTG	66289	PE37A	EA				*	*	*	*	*	6	5
0141					GROUP 03 - FUEL SYSTEM													
0141A					0301 - CARBURETOR													
0142	P	O	R	2910-358-4516	CARBURETOR	79960	11193A	EA				2	4	8	100	200		
0143	P	O		2910-239-1471	GASKET: CARBURETOR MTG (COMPONENT OF GASKET SET, STOCK NO. 2805-912-4316, SEE GROUP 0100)	66289	QC53	EA				*	2	2	18	100	2	29
0144	P	O		2910-594-9067	GASKET KIT	79960	C181-296	EA				2	3	5	60	100		
0145	X1			2910-329-0149	GASKET: BOWL	79960	C142-55	EA										
0146	X1			2910-239-1471	GASKET: FLANGE	79960	C141-4-17	EA										
0147	X2	O			NUT, FLAIN, HEXAGON: CARBURETOR MTG	66289	PD9	EA				*	*	*	*	*	2	26
0148	X2	O		2910-672-1914	WASHER, LOCK	66289	PE37A	EA				*	*	*	*	*		
0149					0304- AIR CLEANER													
0150	P	O		2940-675-5751	BRACKET ASSEMBLY	66289	B1-264BSI	EA				*	*	*	5	*	2	22
0151	P	O		2910-447-9260	GASKET: BRACKET MTG	66289	QD647	EA				*	*	2	10	25	2	23
0152	X2	O			SCREW, MACHINE: BRACKET CLAMPING	66289	XB20	EA				*	*	*	*	*	2	24
0153	P	O		2940-839-6107	FILTER ASSEMBLY, AIR	80749	N76B4	EA				*	*	2	6	5		
0154	X1				BAFFLE	80749	41721K10	EA										
0155	X1				BAIL	80749	229B7K01	EA										
0156	X1				BODY	80749	1316BIK01	EA				2	21					

LINE NO.	(1) SOURCE, MAINT. AND RECOV.			(2) FEDERAL STOCK NUMBER	(3) DESCRIPTION	(4) MANUFACTURER'S		(5) UNIT OF ISSUE	(6) QTY INC			(7) 30-DAY DS/GS MAINT. ALW.			(8) 1-YR. ALW. PER 100 EQUIP. CTNGCY.			(9) DEPOT MAINT. ALW. PER. 100 EQUIP.		(10) ILLUS-TRATION (A) (B) FIG. ITEM OR NO. SYM. NO.		
	(A)	(B)	(C)			CODE	PART NUMBER		IN	PACK	IN	INC	IN	UNIT	1-20	21-50	51-100	PLANNING	ALW. PER.	100 EQUIP.	(A)	(B)
	SOURCE	MAINT.	RECOV.			CODE	PART NUMBER		ISSUE	UNIT	PACK	IN	INC	IN	UNIT	1-20	21-50	51-100	PLANNING	ALW. PER.	100 EQUIP.	FIG.
0157	X1				CUP, OIL	80749	1317B1	EA				1							2			20
0158	X1				DECAL	80749	A6339	EA				1										
0159	X1			2940-423-3292	FASTENER	80749	B6331	EA				1										
0160	X2	0			SCREW, CAP, HEXAGON HEAD: AIR CLEANER TO STRAP	66289	XD6	EA				1	*	*	*	*		*	2			34
0161	X2	0			STRAP, SUPPORT	66289	PG338	EA				1	*	*	*	*		*	2			33
0162	X2	0			WASHER, LOCK: AIR CLEANER TO STRAP	66289	P3E	EA				1	*	*	*	*		*	2			35
0163					0306 - TANKS, LINES, FITTINGS, HEADERS																	
0164	X2	0			BRACKET, TANK	66289	BK97	EA				1	*	*	*	*		*	1			12
0165	X2	0			ELBOW: FUEL LINE TO STRAINER	05748	RF1225	EA				2	*	*	*	*		*	1			7
0166	X2	0			FUEL TANK ASSEMBLY	05748	28008SA	EA				1	*	*	*	*		*				
0167	P	0		2910-429-6047	CAP, TANK	05748	18329SA	EA				1	2	4	8	100		200	1			3
0168	X2	0			CHAIN, CAP	05748	18328	EA				1	*	*	*	*		*				
0169	X2	0			FUEL TANK	05748	28044	EA				1	*	*	*	*		*				5
0170	P	0		2910-841-8938	STRAINER	05748	18327	EA				1	*	*	*	5		3	1			4
0171	P	0		2910-447-9287	LINE ASSEMBLY, FUEL: STRAINER TO CARBURETOR	66289	RP902	EA				1	2	4	8	100		200	1			8
0172	X2				NUT, PLAIN, HEXAGON: FUEL TANK STRAP	05748	PD77	EA				2	*	*	*	*		*	1			14
0173		0		4730-288-8571	PLUG, PIPE: FUEL TANK DRAIN			EA				1	*	*	*	*		*	1			13
0174	X2	0			SCREW, CAP, HEXAGON HEAD: FUEL TANK BRACKET MTG, 3/8-16 X 3/4 IN. LG	05748	XD25	EA				2	*	*	*	*		*	1			9
0175	X2	0			SCREW, MACHINE, ROUND HEAD: FUEL TANK STRAP	05748	XA52	EA				2	*	*	*	*		*	1			1
0176	X2	0			STAND PIPE: FUEL TANK	66289	RM1280A	EA				1	*	*	*	*		*	1			11
0177	X2	0		2910-672-1914	STRAP, FUEL TANK	66289	PG733	EA				2	*	*	*	*		*	1			2
0178	X2	0			WASHER, LOCK: FUEL TANK BRACKET MTG	05748	PE5	EA				2	*	*	*	*		*	1			10
0179	X2	0			WASHER, LOCK: FUEL TANK STRAP	05748	PE3	EA				2	*	*	*	*		*	1			15
0180					0308 - ENGINE SPEED GOVERNOR AND CONTROLS																	
0181	X2	F		2990-376-0386	BRACKET, GOVERNOR	66289	TC325	EA				1	*	*	*	*		*	10			14
0182	P	0		2990-383-9339	CONTROL ASSEMBLY	66289	VE363A	EA				1	*	*	*	5		2	7			1
0183	X2	0		2990-536-2962	BLOCK, SWIVEL	66289	TC301-3	EA				1	*	*	*	*		*	7			3
0184	X2	0		2990-353-5961	BRACKET, CONTROL	66289	VC22C	EA				1	*	*	*	*		*	7			15
0185	X2	0		2990-424-2835	LEVER, CONTROL	66289	VB112	EA				1	*	*	*	*		*	7			16
0185A	X2	0			NUT, PLAIN, HEXAGON: GOVERNOR SPRING ADJUSTING	66289	PD151	EA				2	*	*	*	*		*	7			4
0185B	X2	0			NUT, PLAIN, HEXAGON: SUPPORT BRACKET MOUNTING	66289	PD153	EA				1	*	*	*	*		*	7			14
0185C	X2	0			PIN, COTTER: SPRING RETAINING	66289	X1-1	EA				1	*	*	*	*		*	7			6
0186		0		5315-265-9197	PIN, SUPPORT	66289	PC393-2	EA				1	*	*	*	*		*	7			9
0186A	X2	0			SCREW, MACHINE: BRACKET MTG	66289	XC14	EA				1	*	*	*	*		*	7			10



LINE NO.	(1) SOURCE, MAINT. AND RECOV.			(2) FEDERAL STOCK NUMBER	(3) DESCRIPTION	(4) MANUFACTURER'S		(5) QTY INC			(6) 30-DAY DS/GS MAINT. ALW.			(7) 1-YR. ALW. PER 100 EQUIP.		(8) DEPOT MAINT. ALW. PER. 100 EQUIP.		(9) ILLUS-TRATION (A) (B)				
	CODE	(A) SOURCE	(B) MAINT.			(C) RECOV.	CODE	PART NUMBER	UNIT OF ISSUE	IN	UNIT	PACK	IN	UNIT	1-20	(A) 21-50	(B) 51-100	CTNGCY. PLANNING	ALW. PER. 100 EQUIP.	ALW. PER. 100 EQUIP.	FIG. NO.	ITEM OR SYM. NO.
0186B	X2		0		SCREW: GOVERNOR SPRING ADJUSTING	66289	P1-121	EA				1	*	*	*	*	*		7	5		
0186C	X2		0		SCREW, CAP, HEXAGON HEAD: SUPPORT BRACKET	66289	XA6	EA			1	*	*	*	*	*	*		7	13		
0187	X2		0	5340-256-7147	SPRING, HELICAL	66289	PM117	EA			1	*	*	*	*	*	*		7	8		
0187A	X2		0		WASHER: BLOCK MTG	66289	PH253	EA			1	*	*	*	*	*	*		7	2		
0187B	X2		0		WASHER: BRACKET MTG	66289	PE55	EA			1	*	*	*	*	*	*		7	11		
0187C	X2		0		WASHER, FLAT: SUPPORT BRACKET	66289	QD695	EA			1	*	*	*	*	*	*		7	12		
0187D	X2		0		WASHER: SUPPORT PIN MTG	66289	PH84	EA			1	*	*	*	*	*	*		7	7		
0188	X2		F	2990-701-6853	FLYWEIGHT ASSEMBLY	66289	TC322SI	EA			2	*	*	*	*	*	*		10	5		
0189	X1			5330-285-5061	GASKET: GOVERNOR BRACKET (COMPONENT OF GASKET SET, STOCK NO. 2805-912-4316, SEE GROUP 0100)	66289	QD571	EA			1								10	13		
0190	X2		0	2990-301-6374	LEVER, GOVERNOR	66289	TC332	EA			1	*	*	*	*	*	*					
0191	X2		F		NUT, PLAIN, HEXAGON: GOVERNOR CONTROL LEVER MTG	66289	PD9	EA			1	*	*	*	*	*	*		10	2		
0192	X2		F		PIN, FLYWEIGHT	66289	PA340	EA			2	*	*	*	*	*	*		10	4		
0193	P		0	5306-356-0965	ROD, GOVERNOR	66289	VE304	EA			1	*	*	*	*	5		2				
0194	X2		F		SCREW, CAP, HEXAGON HEAD: GOVERNOR SHAFT BRACKET MTG	66289	XD6	EA			2	*	*	*	*	*	*		10	1		
0195	P		F	2990-661-8942	SLEEVE, GOVERNOR	66289	TC323	EA			1	*	*	*	*	5		2	10	9		
0196	P		F	2910-215-7236	SPACER, GOVERNOR	66289	TC321	EA			1	*	*	*	*	5		2	10	10		
0197	P		0	2990-224-8188	SPRING, GOVERNOR	66289	PM74	EA			1	*	*	*	2	10		8				
0198	P		F	2990-511-7629	YOKE AND SHAFT, GOVERNOR	66289	TC324C	EA			1	*	*	*	*	5		2	10	12		
0199					0309 - FUEL FILTERS																	
0200	P		0	2910-202-8795	STRAINER ASSEMBLY	78480	OW418T	EA			1	*	*	2		10		3	1	6		
0201	P		0	2910-269-7126	BOWL, GLASS	78480	OW363	EA			1	4	8	16		192		384				
0202	X1				COVER	78480	OW361	EA			1											
0203	P		0	5330-187-2962	GASKET: BOWL	78480	06096	EA			1	4	8	17		200		100				
0204	X1				PACKING, NEEDLE VALVE	78480	07769	EA			1	*	2	2		20		20				
0205	P		0	2910-142-2738	SCREEN, FILTER	78480	OW352	EA			1											
0206	X1			2540-703-9134	VALVE	78480	OW432	EA			1	*	*	*		5		2				
0207	P		0	2910-382-8768	WIRE AND NUT ASSEMBLY	78480	OW447	EA			1	2	4	8		100		200	15	1		
0208					GROUP 04 - EXHAUST SYSTEM																	
0208A					0401 - MUFFLER AND PIPES																	
0209	P		0	2990-840-8817	ARRESTOR, SPARK	04147	0610-30	EA			1	*	2	2		20		50				
0210	P		0	2990-989-3247	PIPING, EXHAUST	81337	02-5-14-1285	EA			1	*	2	2		20		50				
0211			0	4730-254-1802	ELBOW, STREET: 90 DEG, 1 IN. NPT																	
					MUFFLER MTG			EA			1	*	*	*	*	*	*		15	3		
0212			0	4730-265-6907	NIPPLE, PIPE, CLOSE: 1 IN. NPT						1	*	*	*	*	*	*		15	2		
					MUFFLER MTG			EA			1	*	*	*	*	*	*		15	2		

LINE NO.	(1) SOURCE, MAINT. AND RECOV.			(2) FEDERAL STOCK NUMBER	(3) DESCRIPTION	(4) MANUFACTURER'S CODE	(5) PART NUMBER	(6) UNIT OF ISSUE	(7) QTY INC IN UNIT	(8) 30-DAY DS/GS MAINT. ALW.			(9) 1-YR. ALW. PER CTNGCY. PLANNING		(10) ILLUS-TRATION			
	(A)	(B)	(C)							(A)	(B)	(C)	100 EQUIP.	DEPOT MAINT.	(A)	(B)		
	SOURCE	MAINT.	RECOV.							1-20	21-50	51-100	ALW. PER.	100 EQUIP.	FIG. NO.	ITEM OR SYM. NO.		
0213					GROUP 05 - COOLING SYSTEM													
0213A					0502 - COWLING, DEFLECTORS, AIR DUCTS, SHROUDS													
0214	X2	0			SCREW, CAP, HEXAGON HEAD: SHROUD MTG	66289	XA34	EA	2	*	*	*	*			6	7	
0215	P	0		2930-839-6109	SHROUD ASSEMBLY	66289	SE53A16S1	EA	1	*	*	*	5					
0216	P	0		2930-839-6111	SCREEN: SHROUD	66289	SE153	EA	1	*	*	*	5		6		3	
0217	P	0		2930-384-8486	SHROUD	66289	SE54	EA	1	*	*	*	5				6	2
0218	X2	0			WASHER, LOCK: SHROUD MTG	66289	PE3	EA	2	*	*	*	*			6	8	
0219					GROUP 06 - ELECTRICAL SYSTEM													
0219A					0605 - IGNITION COMPONENTS													
0220	P	0		2920-047-4530	GASKET: MAGNETO MTG (COMPONENT OF GASKET SET, STOCK NO. 2805-912-4316, SEE GROUP 0100)	66289	QD570A	EA	1	*	2	2	18		100			
0221	P	0		2805-672-9510	GEAR, MAGNETO	66289	GD87C	EA	1	*	*	2	10		5			
0222	P	0	R	2920-015-6244	MAGNETO	82796	FMXDE1B7S1	EA	1	*	2	2	20		2		3	
0223	P	F		2920-428-7543	BEARING	82796	A5950A	EA	1	*	*	2	10		10		3	12
0224	P	F		3110-144-8998	BEARING	82796	C5949	EA	1	*	*	2	10		10		3	19
0225	P	F		2920-849-2137	BUSHING, SWITCH	82796	F4373	EA	1	*	*	*	10		5		3	39
0226	P	F		2920-319-5058	CLIP, COIL	82796	D6120	EA	1	*	*	*	10		5		3	15
0227	X2	F		5340-246-3405	CLIP, RETAINING: SHAFT	82796	B1498D	EA	1	*	*	*	*		*		3	20
0228	P	F		2990-981-0763	COUPLING ASSEMBLY	82796	LV2563C	EA	1	*	*	*	5		3			
0229	X2	0		2920-714-5869	COVER, VENT	82796	B6030A	EA	2	*	*	*	*		*		3	34
0230	P	0		2920-523-8602	GASKET	82796	K2498	EA	1	2	3	5	60		100		3	42
0231	P	F		2920-455-7098	HOUSING	82796	RX2425	EA	1	*	*	*	5		*		3	35
0232	P	0		2920-939-9834	OUTLET, CABLE	82796	AX2474	EA	1	*	*	2	10		5		3	4
0233		F		5305-831-0140	PIN, STOP	82796	S2568	EA	1	*	*	*	*		*		3	32
0234	X2	F			PLUNGER, SWITCH	82796	CW2514A	EA	1	*	*	*	*		*		3	37
0235	P	0		2920-319-5055	POINT SET	82796	A2437A	EA	1	4	8	17	200		100		3	8
0236	P	F		5340-246-3405	RING, RETAINING: SHAFT	82796	B1498B	EA	1	*	*	*	5		3		3	18
0237	X2	0			RING, SNAP: CONTACT RETAINING	82796	C1498G	EA	1	*	*	*	*		*		3	7
0238	P	F		2920-315-1970	ROTOR	82796	DW2480	EA	1	*	*	*	5		3		3	13
0239	X2	0		2920-714-5868	SCREEN, VENT	82796	C6032B	EA	2	*	*	*	*		*		3	33
0240	P	F		2920-356-1221	SEAL, SHAFT	82796	G3861	EA	1	2	3	5	60		100		3	30
0241	X2	F			SLINGER, OIL	82796	E2303	EA	1	*	*	*	*		*		3	28
0242	P	F		5340-B90-0262	SPRING, HELICAL, COMPRESSION	82796	E2513A	EA	1	*	*	2	10		5		3	38
0243	X2	F		2920-354-0766	SUPPORT, BEARING	82796	V4631	EA	1	*	*	*	*		*		3	11
0244		F		5310-205-7981	WASHER, INNER	82796	A2492C	EA	1	*	*	*	*		*		3	31
0245		F		5310-285-1591	WASHER, OUTER	82796	A2492A	EA	1	*	*	*	*		*		3	29
0246	P	0		2920-354-0750	WICK, CAM	82796	G2788	EA	1	2	3	5	60		100		3	44
0247	X1			2920-286-2712	BUSHING	82796	F2572	EA	1								3	22

LINE NO.	(1) SOURCE, MAINT. AND RECOV.			(2) FEDERAL STOCK NUMBER	(3) DESCRIPTION	(4) MANUFACTURER'S CODE	(5) PART NUMBER	(6) UNIT OF ISSUE	(7) QTY INC IN UNIT	(8) 30-DAY DS/GS MAINT. ALW.			(9) 1-YR. ALW. PER 100 EQUIP. CTNGCY. PLANNING	(10) ILLUS-TRATION				
	(A) SOURCE	(B) MAINT.	(C) RECOV.							QTY INC IN UNIT	(A) 1-20	(B) 21-50		(C) 51-100	ALW. PER. 100 EQUIP.	DEFOT MAINT. ALW. PER. 100 EQUIP.	(A) FIG. NO.	(B) ITEM OR SYM. NO.
0248	X1			2920-939-9835	HUB	82796	SZ2563	EA							3	25		
0249		F		5310-737-2632	NUT	82796	M2570	EA	1	*	*	*	*	*	3	21		
0250	X1				PAWL	82796	H2566	EA	1						3	27		
0251	X1				SHELL	82796	WY5957	EA	1						3	23		
0252	X2	F		2920-354-0741	SPRING, COUPLING	82796	D2565	EA	1	*	*	*	*	*	3	24		
0253	X1				SPRING, PAWL	82796	S5963	EA	1						3	26		
0254	P	0		2920-849-2138	CAP	82796	MY2430A	EA	1	*	*	2	6	2	3	41		
0255	P	0		2910-840-8811	CAPACITOR	82796	QX2433	EA	1	*	*	2	10	100	3	2		
0256	P	0		2920-349-3887	COIL	82796	T2477C	EA	1	*	*	2	10	25	3	16		
0257		F		5315-715-1699	KEY, WOODRUFF: IMPULSE COUPLING			EA	1	*	*	*	*	*	3	17		
0258	P	0		2920-839-6106	PACKING, PREFORMED: CAPACITOR MTG	82796	P2473	EA	1	*	*	2	10	100	3	3		
0259	X1				PLATE, IDENTIFICATION	82796	N195	EA	1									
0260	X2	F		2920-444-8599	ROD, LEAD	82796	P983	EA	1	*	*	*	*	*				
0261		0		5305-042-0463	SCREW, ASSEMBLED WASHER: CAM WICK MTG AND BEARING SUPPORT MTG			EA	5	*	*	*	*	*	3	10		
0262		0		5305-281-6387	SCREW, ASSEMBLED WASHER: COVER MTG			EA	4	*	*	*	*	*	3	40		
0263		0		5305-655-9502	SCREW, ASSEMBLED WASHER: TERMINAL SCREW AND CAPACITOR			EA	4	*	*	*	*	*	3	1		
0264		F		5305-042-0449	SCREW, ASSEMBLED WASHER: VENT COVER AND COIL CLIP			EA	3	*	*	*	*	*	3	14		
0265		0		5305-042-0465	SCREW, MACHINE: CABLE OUTLET MTG			EA	2	*	*	*	*	*	3	6		
0266		F		5305-010-2585	SETScrew: COIL BRIDGE			EA	1	*	*	*	*	*	3	36		
0267		0		5310-262-2998	WASHER, FLAT: CAM WICK AND CONTACT SET MTG			EA	1	*	*	*	*	*	3	43		
0268		0		5310-655-6369	WASHER, FLAT: CONTACT MTG			EA	1	*	*	*	*	*	3	9		
0269		0		5310-010-6496	WASHER, LOCK: CABLE OUTLET MTG			EA	2	*	*	*	*	*	3	5		
0270	X2				NUT, FLAIN, HEXAGON: MAGNETO MTG	66289	PD10	EA	1	*	*	*	*	*				
0271		0		5306-207-9138	SCREW, CAP, HEXAGON HEAD: MAGNETO MTG	66289	PB164	EA	1	*	*	*	*	*				
0272	X2				SCREW, CAP, HEXAGON HEAD: MAGNETO MTG	66289	XD17	EA	1	*	*	*	*	*				
0273	P	0		2920-810-7082	SPARK PLUG	96906	MS51009-1	EA	1	8	17	33	400	100	2	4		
0274	X2				WASHER, LOCK: MAGNETO MTG	66289	PE525A	EA	3	*	*	*	*	*				
0275	P	0		2920-839-6113	WIRE ASSEMBLY, SPARK PLUG	66289	YD300A	EA	1	*	*	2	10	10	2	1		
0276					GROUP 15 - FRAME, TOWING ATTACHMENTS, AND DRAWBAR													
0276A					1501 - FRAME ASSEMBLY													
0277	X2				BASE	05748	00-5-14-1286	EA	1	*	*	*	*	*	11	4		
0278	X2				BUMPER			EA	2	*	*	*	*	*	12	3		
					(81337) 01-5-14-1284ITEM2-8													
0279	X2				GRIP, HANDLE			EA	2	*	*	*	*	*	12	6		
					(81337) 01-5-14-1284ITEM2-7													
0280	X2				HANDLE, CARRYING			EA	1	*	*	*	*	*	12	1		
					(81337) 02-5-14-12ITEM2-1													
0281				5310-208-4764	NUT, FLAIN, HEXAGON: BUMPER MTG			EA	2	*	*	*	*	*	12	5		

LINE NO.	(1) SOURCE, MAINT. AND RECOV.			(2) FEDERAL STOCK NUMBER	(3) DESCRIPTION	(4) MANUFACTURER'S		(5) UNIT OF ISSUE	(6) QTY INC IN UNIT	(7) 30-DAY DS/GS MAINT. ALW.			(8) 1-YR. ALW. PER 100 EQUIP. CTNGCY. PLANNING	(9) DEPOT MAINT. ALW. PER. 100 EQUIP.	(10) ILLUS-TRATION (A) (B) FIG. ITEM OR NO. SYM. NO.		
	(A) SOURCE	(B) MAINT.	(C) RECOV.			CODE	PART NUMBER			1-20	(B) 21-50	(C) 51-100			(A)	(B)	(C)
0282		0		5305-058-3888	SCREW, MACHINE: BUMPER MTG			EA		2	*	*	*	*	*	12	2
0283		0		5310-010-6496	WASHER, LOCK: BUMPER MTG			EA		2	*	*	*	*	*	12	4
0284					GROUP 18 - BODY, CAB, HOOD AND HULL												
0284A					1808 - BOXES, CARRYING CASE												
0285	X2	0		4940-672-4764	BOX ASSEMBLY (81337) 00-5-14-1288ITEM3			EA		1	*	*	*	*	*		
0286	X2	0			BOX LESS COVERS (81337) 00-5-14-1288ITEM3-23			EA		1	*	*	*	*	*		
0287	X2	0			HANDLER (81337) 00-5-14-1288ITEM3-35			EA		4	*	*	*	*	*		
0288	X2	0			COVER: LH (81337) 00-5-14-1289ITEM3-1			EA		1	*	*	*	*	*		
0289	X2	0			COVER: RH (81337) 00-5-14-1289ITEM3-13			EA		1	*	*	*	*	*		
0290	X2	0			BOX, TOOL, NUMBER 1	81337	005-14-1291	EA		1	*	*	*	*	*	11	3
0291	X2	0			BOX, TOOL, NUMBER 2	81337	00-5-14-1292	EA		1	*	*	*	*	*	11	1
0292		0		5310-275-5512	NUT, PLAIN, HEXAGON: TOOL BOX MTG			EA		4	*	*	*	*	*	11	6
0293		0		5305-637-4028	SCREW, CAP, HEXAGON HEAD: TOOL BOX MTG			EA		4	*	*	*	*	*	11	2
0294		0		5310-012-0380	WASHER, LOCK: TOOL BOX MTG			EA		4	*	*	*	*	*	11	5
0295					GROUP 22 - BODY CHASSIS OR HULL, AND ACCESSORY ITEMS												
0296	P	0		5975-577-8825	ROD, GROUND (81337) 02-5-14-1285ITEM2-27			EA		1	*	*	*	5	3	16	1
0297	X2	0			WIRE AND FITTINGS	81337	02-5-14-1285	EA		1	*	*	*	*	*		
0298	P	0		4320-B90-0013	CLAMP (81337) 02-5-14-1285ITEM2-29			EA		1	*	*	*	5	3	16	4
0299	P	0		4940-B90-0009	LEAD, ELECTRICAL (81337) 02-5-14-1285ITEM2-30			EA		1	*	*	*	5	3	16	3
0300	P	0			TERMINAL, LUG (81337) 02-5-14-1285ITEM2-31			EA		1	*	*	*	5	3	16	2
0301					2210 - DATA PLATES AND INSTRUCTION HOLDERS												
0302	X2	0			PLATE, IDENTIFICATION	05748	26650	EA		1	*	*	*	*	*		
0303	X2	0			PLATE, IDENTIFICATION	05748	27286	EA		1	*	*	*	*	*		
0304	X2	0			PLATE, INSTRUCTION: ENGINE	66289	SD251	EA		1	*	*	*	*	*		

LINE NO.	(1) SOURCE, MAINT. AND RECOV.			(2) FEDERAL STOCK NUMBER	(3) DESCRIPTION	(4) MANUFACTURER'S		(5) UNIT OF ISSUE	(6) QTY INC IN UNIT	(7) 30-DAY DS/GS MAINT. ALW.			(8) 1-YR. ALW. PER CTNGCY. PLANNING	(9) DEPOT MAINT. ALW. PER. 100 EQUIP.	(10) ILLUS-TRATION (A) (B)	
	(A)	(B)	(C)			CODE	PART NUMBER			1-20	21-50	51-100			FIG.	ITEM OR
	SOURCE	MAINT.	RECOV.													NO.
0305					GROUP 55 - PUMPS											
0305A					5500 - PUMP ASSEMBLY											
0306		0		5310-260-7924	NUT, PLAIN, HEXAGON: PUMP MTG			EA	2	*	*	*	*	*	5	15
0307	X2	0		4320-913-7131	PUMP ASSEMBLY	05478	28001CA	EA	1	*	*	*	*	*	5	
0308	P	F		4320-360-0586	COUPLING HEAD	05748	5364	EA	1	*	*	*	5	3	5	9
0309	P	0		4320-360-0601	GASKET SET	05748	8121SA	EA	1	2	4	8	100	200		
0310	P	0		4320-360-0597	SEAL	05748	8022	EA	1	2	4	8	100	200	5	7
0311	X1				GASKET: BODY	05748	8021	EA	1						5	3
0312	X1				GASKET: BODY	05748	8030	EA	2						5	3
0313	P	0		4320-360-0602	SHIM SET	05748	8139SA	EA	1	2	4	8	100	200	5	
0314	X1	0			SHIM: 0.10 THK	05748	8053	EA	2					5	5	
0315	X1				SHIM: .031 THK	05748	8054	EA	1					5	5	6
0316	P	0		4320-934-7865	BODY ASSEMBLY: PUMP	05748	28016SA	EA	1	*	*	*	5	3		
0317	X2	0			BODY	05748	28017	EA	1	*	*	*	*	*	5	2
0318	X2	0			BUSHING, REDUCER: PUMP BODY	05748	28021	EA	2	*	*	*	*	*	5	2
0319		0		5310-274-7766	NUT, PLAIN, HEXAGON: BODY MTG			EA	6	*	*	*	*	*	5	12
0320	X2	0			PLUG, PIPE: BODY DRAIN	05748	3207	EA	1	*	*	*	*	*	5	18
0321	X2	0			STUD, PLAIN: PUMP HOUSING, LOWER	05748	2417	EA	4	*	*	*	*	*	5	14
0322	X2	0			STUD, PLAIN: PUMP HOUSING, UPPER	05748	2418	EA	2	*	*	*	*	*	5	8
0323	X2	0		5310-261-7340	WASHER, LOCK: BODY MTG			EA	6	*	*	*	*	*	5	13
0324	X2	F		5305-018-6612	SCREW, CAP, HEXAGON HEAD: COUPLING HEAD MTG			EA	4	*	*	*	*	*	5	10
0325		0		5305-550-1310	SCREW, CAP, HEXAGON HEAD: PUMP MTG			EA	2	*	*	*	*	*	5	17
0326	X2	F		5310-261-7340	WASHER, LOCK: COUPLING HEAD MTG			EA	4	*	*	*	*	*	5	11
0327		0		5310-261-7340	WASHER, LOCK: PUMP MTG			EA	2	*	*	*	*	*	5	16
0328					5501 - SHAFTS, ROTORS, IMPELLERS											
0329	P	F		4320-837-7762	IMPELLER	05748	28018	EA	1	*	*	2	6	5	5	4
0330					5505 - SUCTION AND/OR DISCHARGE ASSEMBLY											
0331	P	0		5340-825-5317	CAP, DUST	96906	MS27028-9	EA	1	*	*	*	8	5		
0332	P	0		4730-980-9411	COUPLING, HALF	96906	MS27024-9	EA	1	*	*	*	8	5		
0333	P	0	R	4720-303-4984	HOSE ASSEMBLY, DISCHARGE (81337) 00-5-14-1293ITEM8			EA	2	*	2	2	20	10		
0334	X2	0		5340-825-5317	CAP, DUST	96906	MS27028-9	EA	2	*	*	*	*	*	14	6
0335	P	0		4320-360-0947	CLAMP, HOSE (81337) 00-5-14-1293ITEM8-6			EA	8	*	2	2	16	24	14	4
0336	P	0		4730-360-0591	COUPLING, HOSE, FEMALE	96906	MS27025-9	EA	2	*	2	2	16	10	14	8
0337	P	0		4730-360-0592	COUPLING, HOSE, MALE	96906	MS27021-9	EA	2	*	2	2	16	10	14	3
0338	P	H		4720-890-0340	HOSE (81337) 00-5-14-1293ITEM8-5 (50 FT REQUIRED FOR EACH ASSEMBLY)			FT	SEE GRP 9501			14	5			

LINE NO.	(1) SOURCE, MAINT. AND RECOV.			(2) FEDERAL STOCK NUMBER	(3) DESCRIPTION	(4) MANUFACTURER'S		(5) UNIT OF ISSUE	(6) QTY INC IN UNIT	(7) 30-DAY DS/GS MAINT. ALW.			(8) 1-YR. ALW. PER 100 EQUIP. CTNGCY. PLANNING	(9) DEPOT MAINT. ALW. PER. 100 EQUIP.	(10) ILLUS-TRATION			
	(A) CODE	(B) MAINT.	(C) RECOV.			CODE	PART NUMBER			(A) 1-20	(B) 21-50	(C) 51-100			(A) FIG. NO.	(B) ITEM OR SYM. NO.		
0339	X2	0		5340-823-5316	PLUG, DUST	96906	MS27029-9	EA		2	*	*	*	*		14	9	
0340	P	0	R	4730-555-8325	HOSE ASSEMBLY, SUCTION (81337) 00-5-14-1293ITEM7			EA		2	*	2	2	20		10		
0341	X2	0		5340-823-5317	CAP, DUST	96906	MS27028-9	EA		2	*	*	*	*			14	6
0342	P	0		4320-360-0947	CLAMP, HOSE (81337) 00-5-14-1293ITEM8-6	96906		EA		8	*	2	2	16		24	14	4
0343	P	0		4730-360-0592	COUPLING, HOSE, MALE	96906	MS27021-9	EA		2	*	2	2	16		10	14	3
0344	P	0		4730-360-0591	COUPLING, HOSE, FEMALE	96906	MS27025-9	EA		2	*	2	2	16		10	14	8
0345	P	H		4720-B90-0341	HOSE (81337) 00-5-14-1293ITEM7-5 (25 FT REQUIRED FOR EACH ASSEMBLY)			FT									14	5
0346	X2	0		5340-823-5316	PLUG, DUST	96906	MS27029-9	EA		2	*	*	*	*			14	9
0347	P	0		4930-B60-0569	NOZZLE ASSEMBLY (81337) 00-5-14-1293ITEM10			EA		2	*	*	*	5		3	14	1
0348	P	0		4730-203-1010	COUPLING, HALF, FEMALE	96906	MS27026-9	EA		2	*	*	2	8		5	14	2
0349	P	0		4930-837-7795	NOZZLE (81337) 00-5-14-1293ITEM10-3			EA		2	*	*	*	5		3		
0350	X2	0		5340-823-5316	PLUG, DUST	96906	MS27029-9	EA		2	*	*	*	*			14	9
0351	X2	0		5340-823-5316	PLUG, DUST	96906	MS27029-9	EA		2	*	*	*	*			14	9
0352	X2	0			TEE: PUMP OUTLET (81337) 00-5-14-1287ITEM2-33			EA		1	*	*	*	*			14	7
0353	P	0		4320-B90-0014	UNLOADED ASSEMBLY (81337) 02-5-14-6921ITEM			EA		1	*	*	2	10		5		
0354	P	0		4730-360-0589	ADAPTER	96906	MS27022-9	EA		1	*	*	2	10		5		
0355	X2	0		5340-823-5317	CAP, DUST	96906	MS27028-9	EA		1	*	*	*	*				
0356	P	0		4730-851-6863	ELBOW (81337) 02-5-14-692ITEM2	96906		EA		1	*	*	*	*				
0357	P	0		4320-B90-0015	SUCTION STUB (81337) 02-5-14-692ITEM1-1			EA		*	*	*	5	3				
0358					GROUP 95 - GENERAL USE STANDARDIZED PARTS													
0358A					9501 - BULK MATERIAL													
0359	P	H		4720-B90-0340	HOSE			FT			5	10	21	150		500		
0360	P	H		4720-B90-0341	HOSE			FT			3	5	10	125		250		

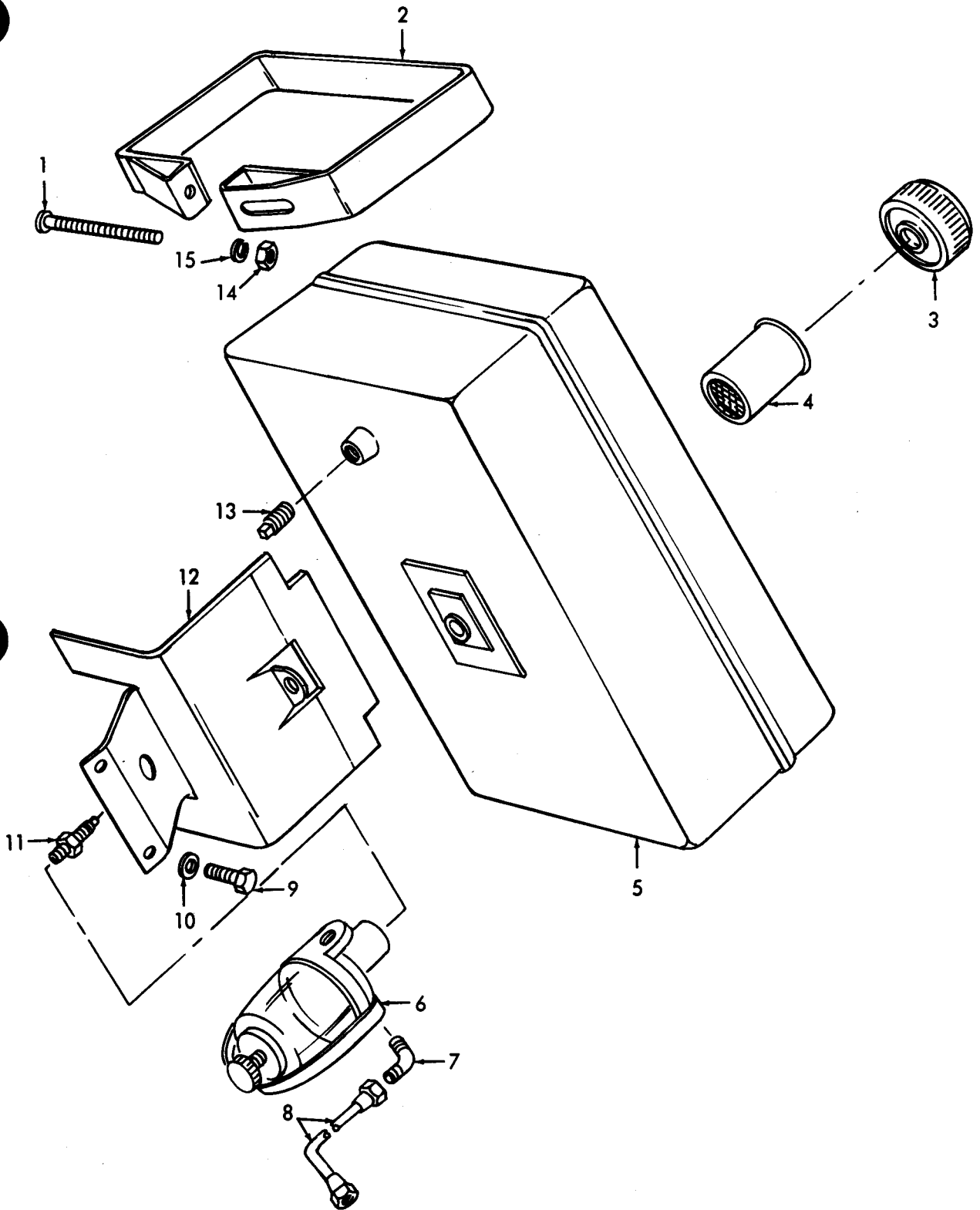


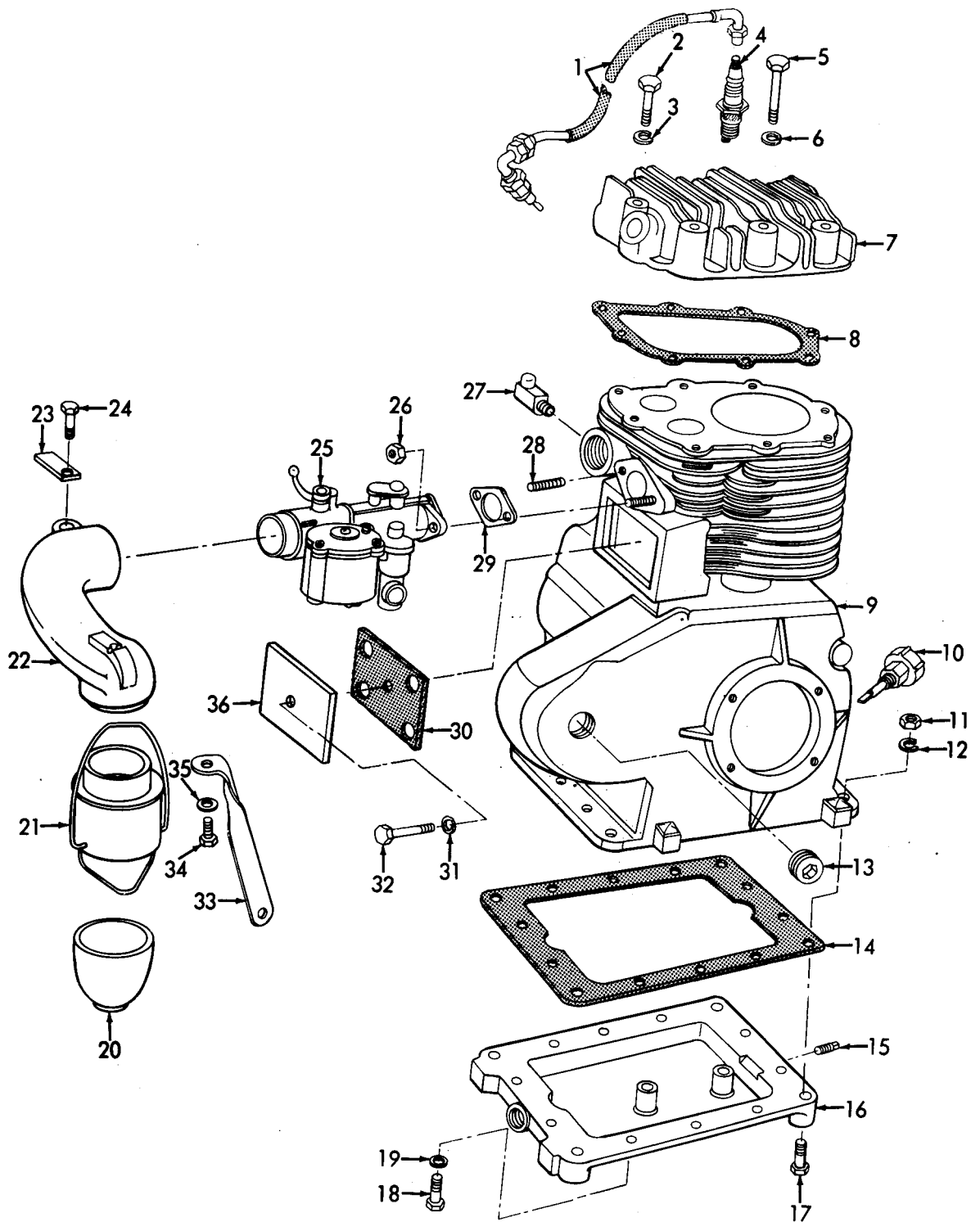
Figure 1. FUEL TANK AND STRAINER

MEC 4320-237-25P/1

INDEX TO PARTS, FIGURE 1

REF NO.	FUNCT GROUP	ITEM NAME	REF NO.	FUNCT GROUP	ITEM NAME	REF NO.	FUNCT GROUP	ITEM NAME
1	0306	SCREW	6	0309	STRAINER AY	11	0306	STAND PIPE
2	0306	STRAP	7	0306	ELBOW	12	0306	BRACKET
3	030.6	CAP	8	0306	LINE AY	13	0306	PLUG
4	03.06	STRAINER	9	0306	SCREW	14	0306	NUT
5	0306	TANK	10.	0306	WASHER	15	0306	WASHER



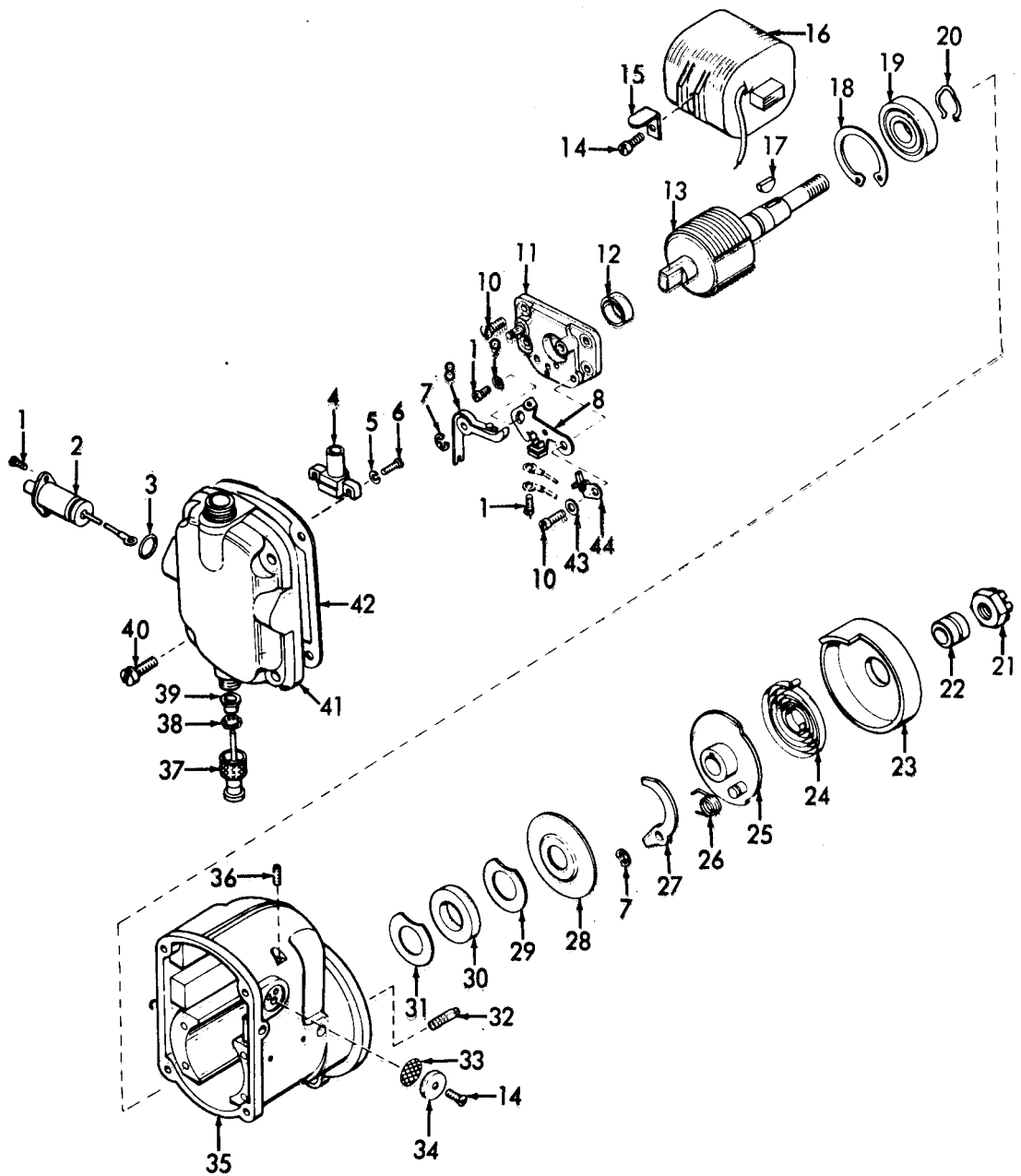


MEC 4320-237-25P/2

FIGURE 2. CRANKCASE CYLINDER HEAD AND RELATED PARTS

INDEX TO PARTS, FIGURE 2

REF NO.	FUNCT GROUP	ITEM NAME	REF NO.	FUNCT GROUP	ITEM NAME	REF NO.	FUNCT GROUP	ITEM NAME
1	0605	WIRE AY	13	0101	PLUG	25	0301	CARBURETOR
2	0101	SCREW	14	0106	GASKET	26	0301	NUT
3	0101	WASHER	15	0106	PLUG	27	0106	BREATHER
4	0605	SPARK PLUG	16	0106	BASE	28	0101	STUD
5	0101	SCREW	17	0100	SCREW	29	0301	GASKET
6	0101	WASHER	18	0106	SCREW	30	0105	GASKET
7	0101	CYLINDER HEAD	19	0106	WASHER	31	0105	WASHER
8	0101	GASKET	20	0304	CUP	32	0105	SCREW
9	0101	CYL-CRNKCS AY	21	0304	BODY	33	0304	STRAP
10	0106	GAGE AY	22	0304	BRACKET AY	34	0304	SCREW
11	0100	NUT	23	0304	GASKET	35	0304	WASHER
12	0100	WASHER	24	0304	SCREW	36	0105	PLATE
						37	0605	<i>Plunger, switch</i>

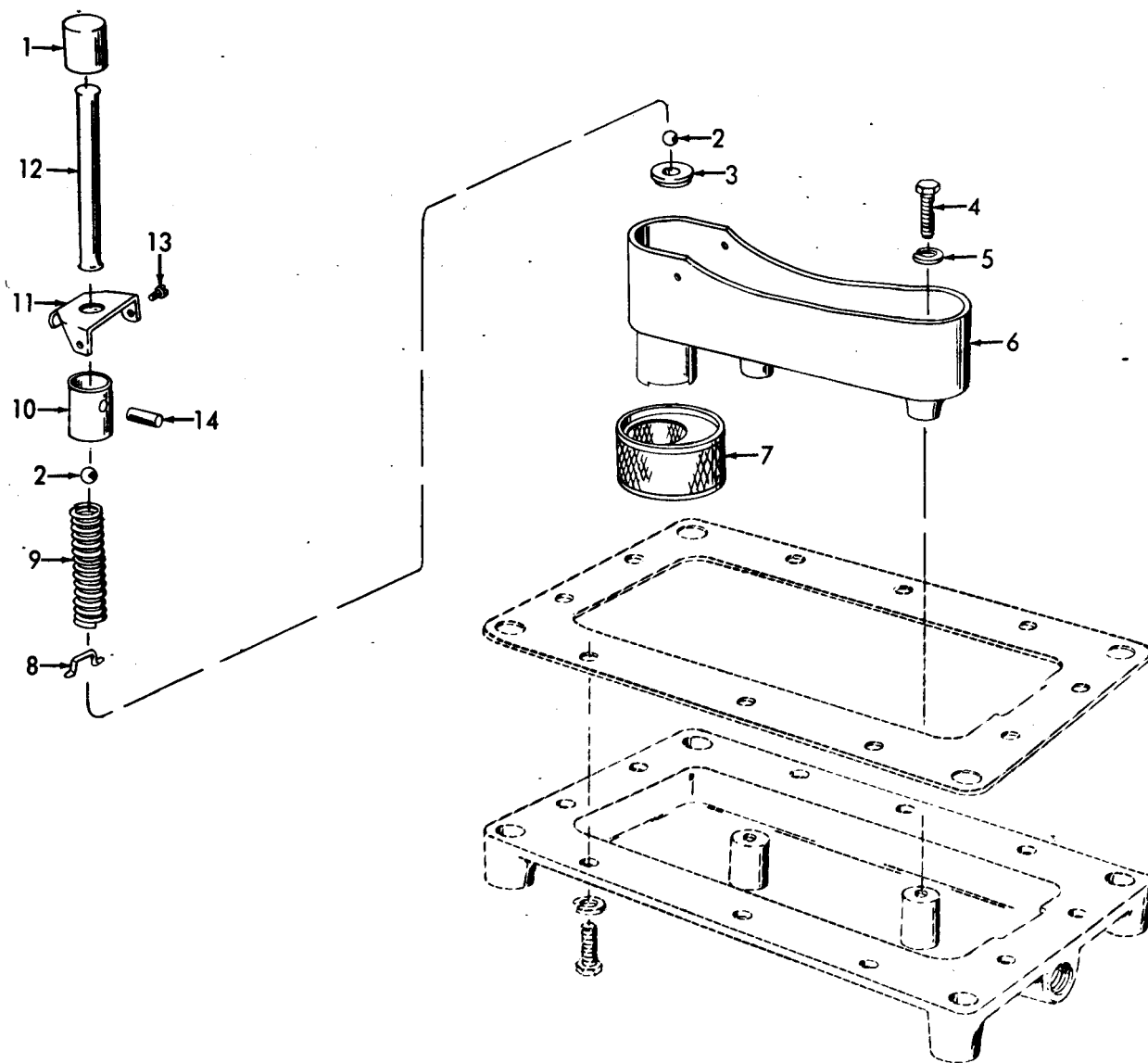


MEC 4320-237-25P/3

FIGURE 3. MAGNETO ASSEMBLY

INDEX TO PARTS, FIGURE 3

REF NO.	FUNCT GROUP	ITEM NAME	REF NO.	FUNCT GROUP	ITEM NAME	REF NO.	FUNCT GROUP	ITEM NAME
1	0605	SCR ASSD WHSR	16	0605	COIL	31	0605	WASHER
2	0605	CAPACITOR	17	0605	KEY	32	0605	PIN
3	0605	PACKING	18	0605	RING	33	0605	SCREEN
4	0605	OUTLET	19	0605	BEARING	34	0605	COVER
5	0605	WASHER	20	0605	CLIP	35	0605	HOUSING
6	0605	SCREW	21	0605	NUT	36	0605	SETSCREW
7	0605	RING	22	0605	BUSHING	37	0605	PLUNGER
8	0605	POINT SET	23	0605	SHELL	38	0605	SPRING
9	0605	WASHER	24	0605	SPRING	39	0605	BUSHING
10	0605	SCR ASSD WHSR	25	0605	HUB	40	0605	SCR ASSD WHSR
11	0605	SUPPORT	26	0605	SPRING	41	0605	CAP
12	0605	BEARING	27	0605	PAWL	42	0605	GASKET
13	0605	ROTOR	28	0605	SLINGER	43	0605	WASHER
14	0605	SCR ASSD WHSR	29	0605	WASHER	44	0605	WICK
15	0605	CLIP	30	0605	SEAL			



MEC 4320-237-25P/4

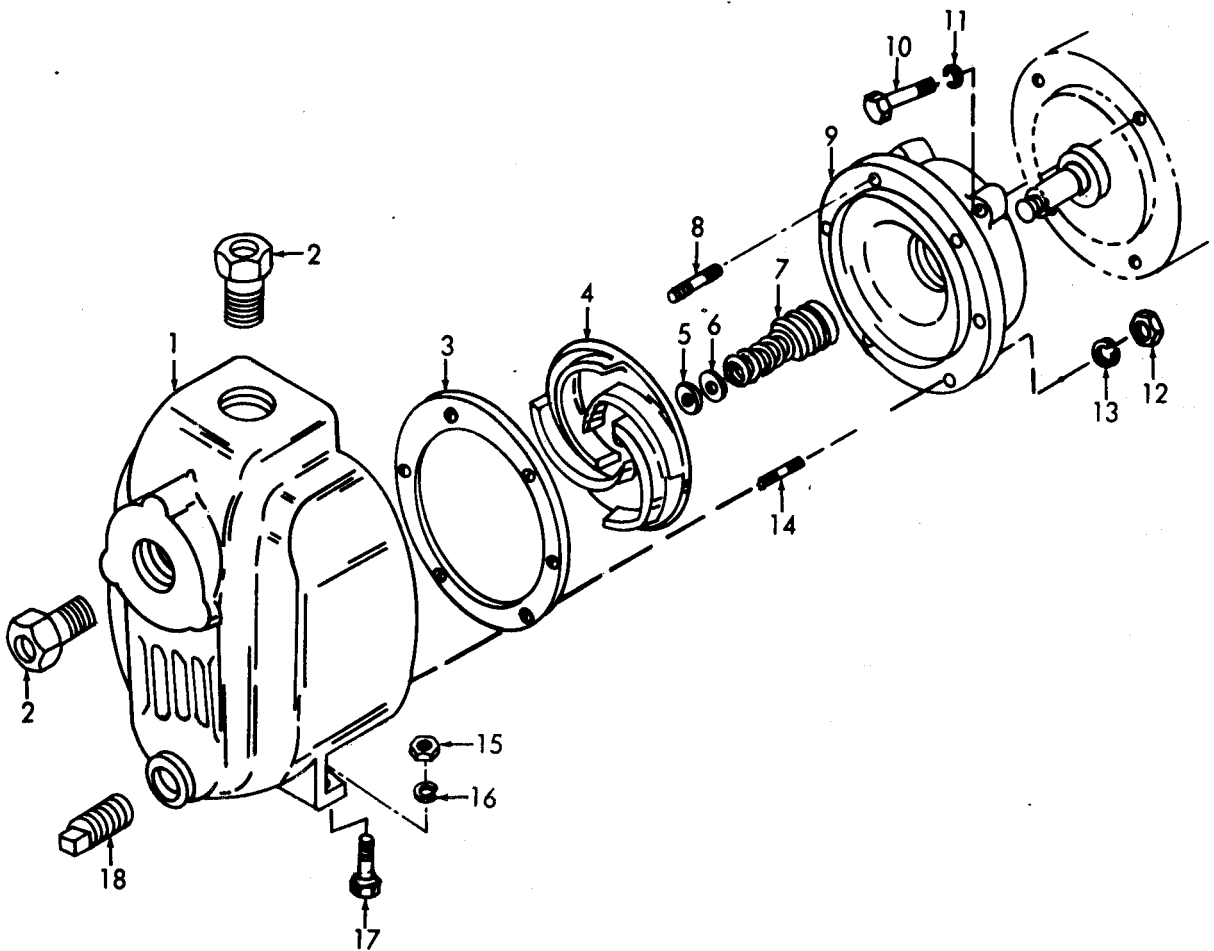
FIGURE 4. OIL PUMP

INDEX TO PARTS, FIGURE 4

REF NO.	FUNCT GROUP	ITEM NAME
1	0106	CAP
2	0106	BAIL
3	0106	SEAT
4	0106	SCREW
5	0106	WASHER

REF NO.	FUNCT GROUP	ITEM NAME
6	0106	BODY
7	0106	STRAINER
8	0106	RETAINER
9	0106	SPRING
10	0106	PLUNGER

REF NO.	FUNCT GROUP	ITEM NAME
11	0106	COVER
12	0106	PUSH ROD
13	0106	SCREW
14	0106	PIN

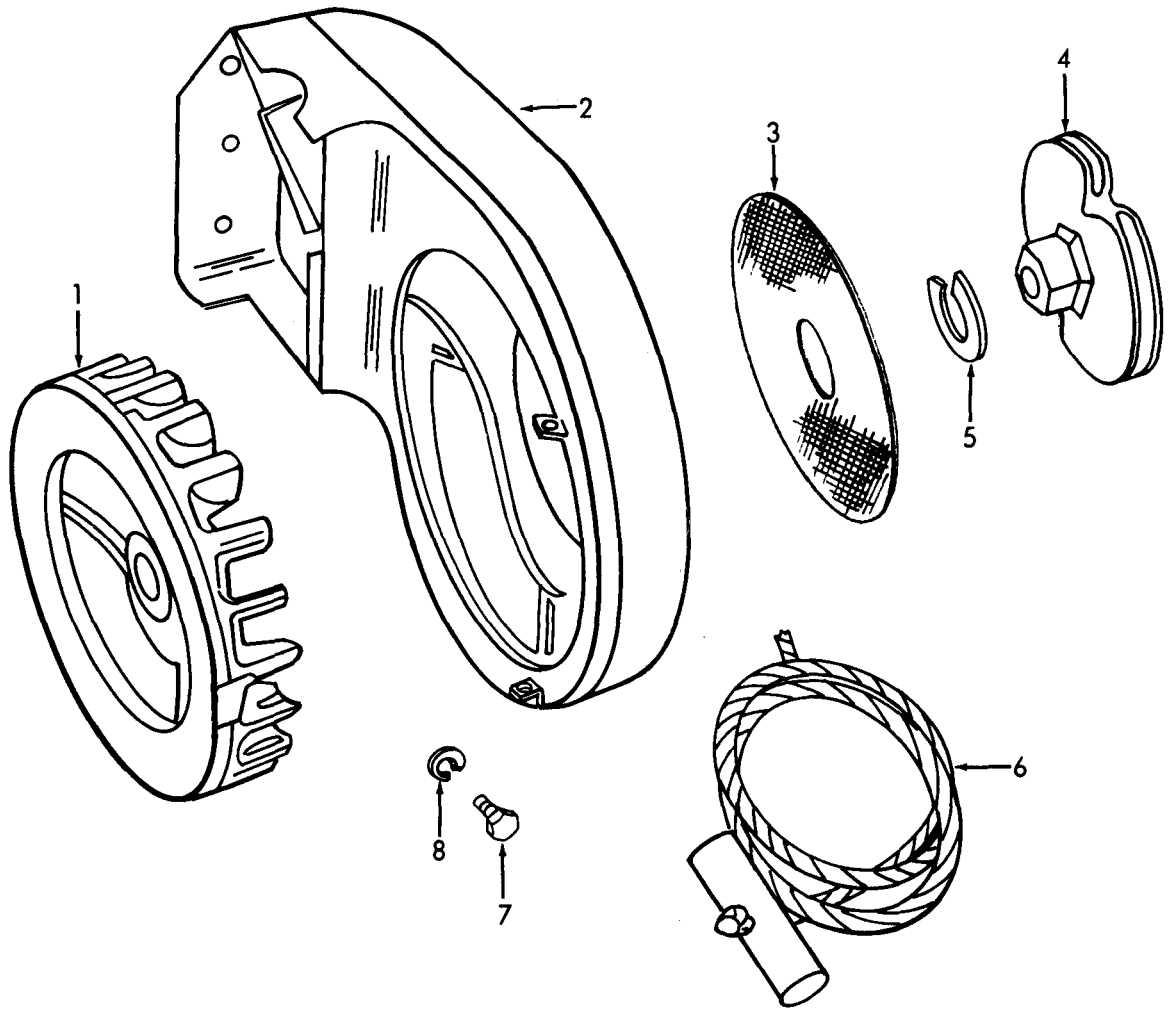


MEC 4320-237-25P/5

FIGURE 5. PUMP

INDEX TO PARTS, FIGURE 5

REF NO.	FUNCT GROUP	ITEM NAME	REF NO.	FUNCT GROUP	ITEM NAME	REF NO.	FUNCT GROUP	ITEM NAME
1	5500	BODY	7	5500	SEAL	13	5500	WASHER
2	5500	BUSHING	8	5500	STUD	14	5500	STUD
3	5500	GASKET	9	5500	COUPLING HEAD	15	5500	NUT
4	5501	IMPELLER	10	5500	SCREW	16	5500	WASHER
5	5500	SHIM	11	5500	WASHER	17	5500	SCREW
6	5500	SHIM	12	5500	NUT	18	5505	PLUG



MEC 4320-237-25P/6

FIGURE 6. FLYWHEEL, SHROUD, STARTER ROPE AND SHEAVE

INDEX TO PARTS, FIGURE 6

REF NO.	FUNCT GROUP	ITEM NAME	REF NO.	FUNCT GROUP	ITEM NAME
1	0103	FLYWHEEL	5	0107	WASHER
2	0502	SHROUD	6	0107	ROPE
3	0502	SCREEN	7	0502	SCREW
4	0107	SHEAVE	8	0502	WASHER

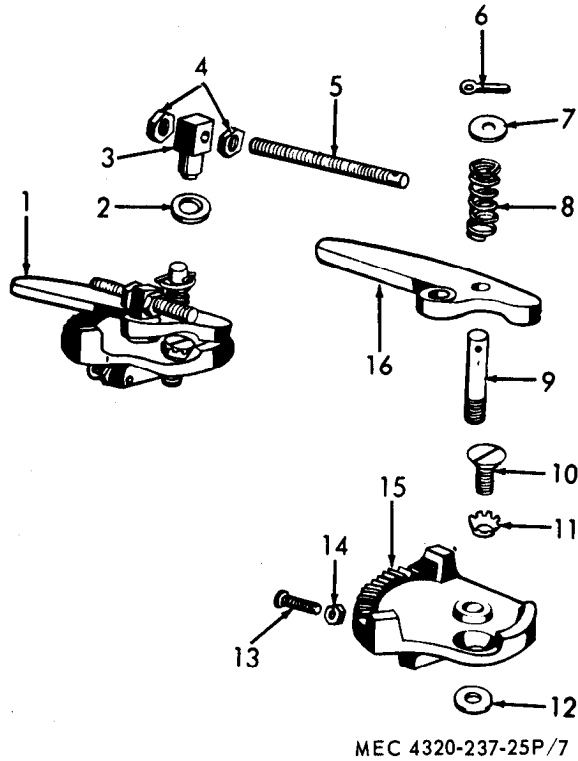
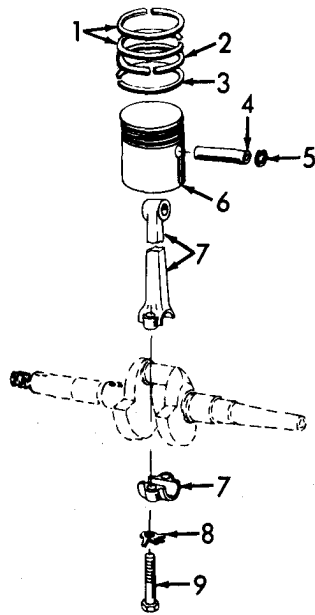


FIGURE 7. GOVERNOR CONTROL

INDEX TO PARTS FIGURE 7

FUNCT GROUP	ITEM NAME	REF NO.	FUNCT GROUP	ITEM NAME	REF NO.	FUNCT GROUP	ITEM NAME
0308	CONTROL AY	7	0308	WASHER	12	0308	WASHER
0308	WASHER	8	0308	SPRING	13	0308	SCREW
0308	BLOCK	9	0308	PIN	14	0308	NUT
0308	NUT	10	0308	SCREW	15	0308	BRACKET
0308	SCREW	11	0308	WASHER	16	0308	LEVER
0308	PIN						



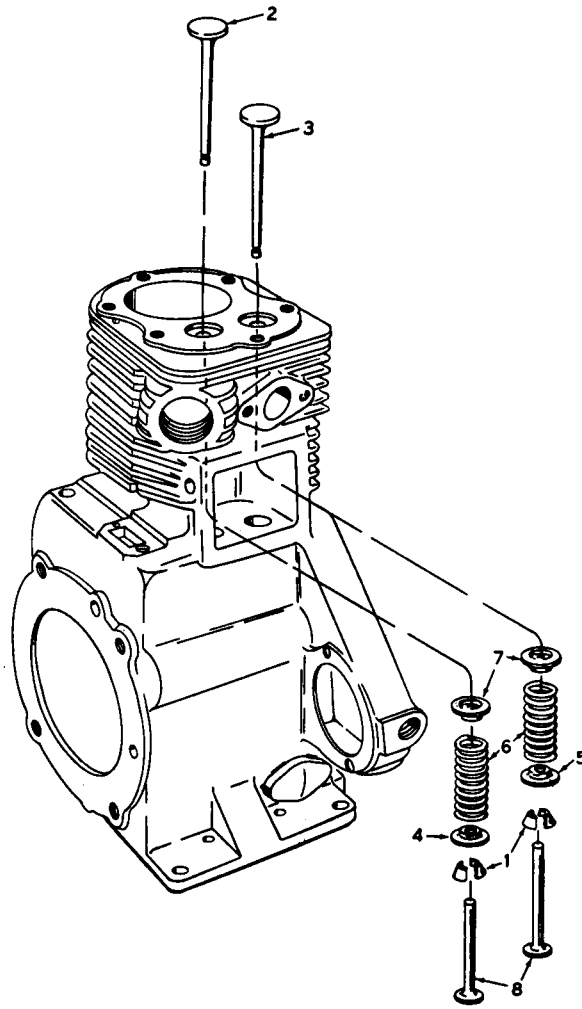


MEC 4320-237-25P/8

FIGURE 8. PISTON AND CONNECTING ROD

INDEX TO PARTS, FIGURE 8

REF NO.	FUNCT GROUP	ITEM NAME	REF NO.	FUNCT GROUP	ITEM NAME
1	0104	RING	6	0104	PISTON AY
2	0104	RING	7	0104	CONNCT ROD
3	0104	RING	8	0104	WASHER
4	0104	PIN	9	0104	SCREW
5	0104	RETAINER			

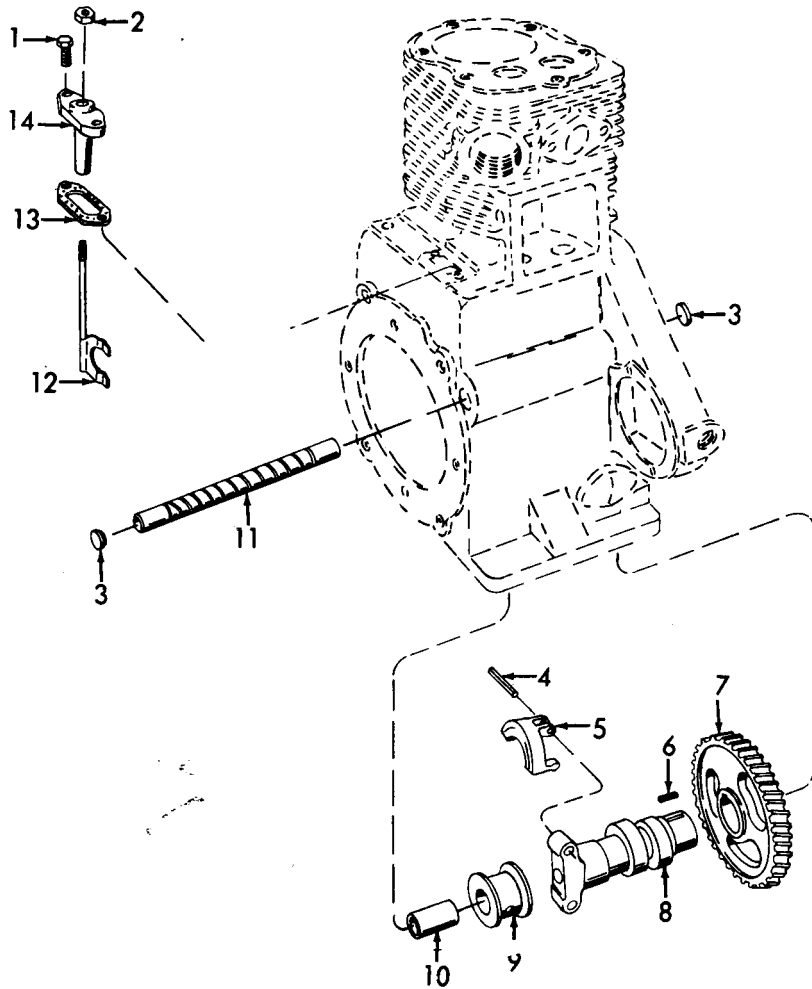


MEC 4320-237-25P/9

FIGURE 9. VALVES

INDEX TO PARTS, FIGURE 9

REF NO.	UNCT GROUP	ITEM NAME	REF NO.	FUNCT GROUP	ITEM NAME
1	0105	LOCK	5	0105	SEAT
2	0105	VALVE	6	0105	SPRING
3	0105	VALVE	7	0105	LOCATOR
4	0105	ROTR-SPRG SEAT	8	0105	TAPPET

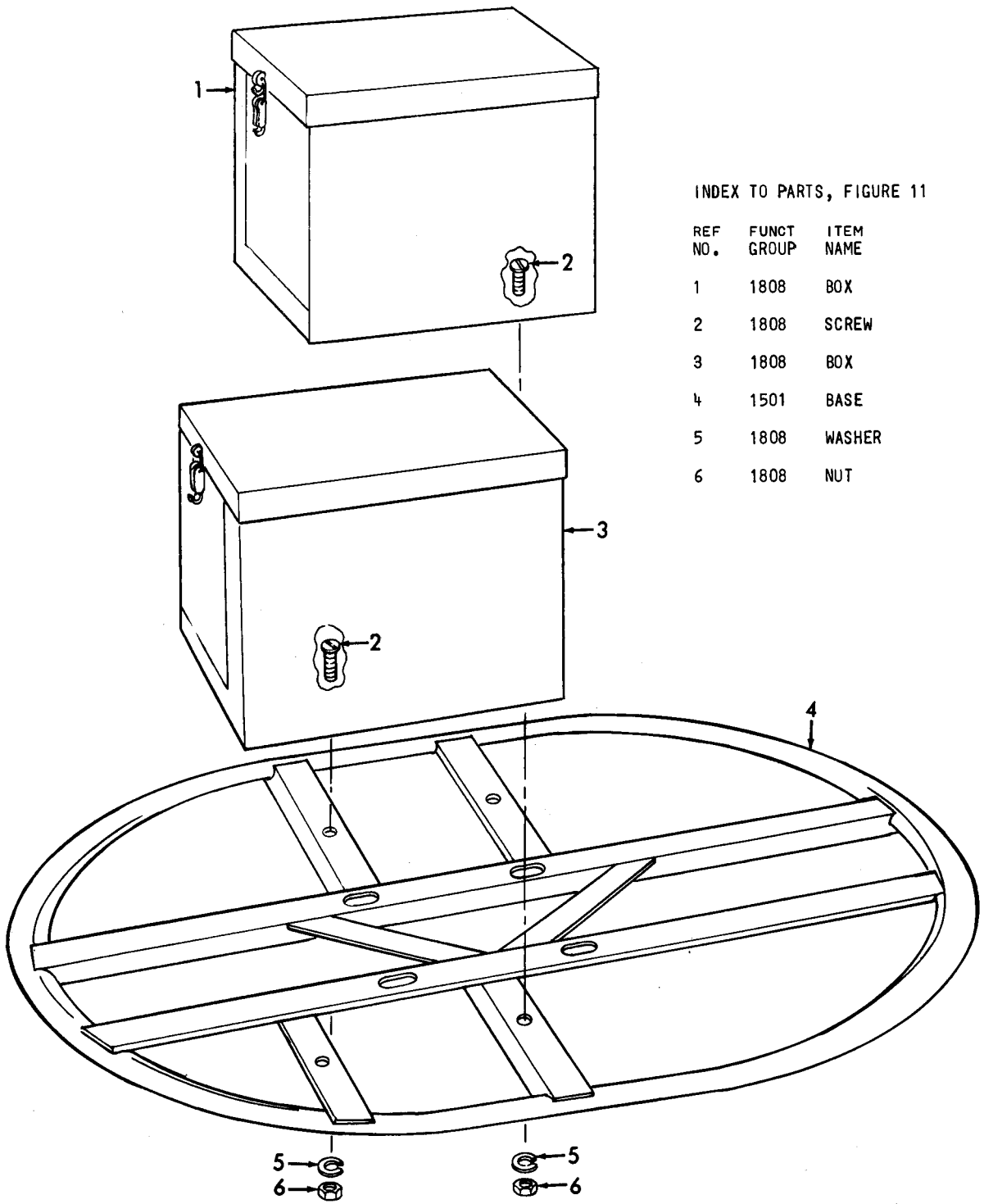


MEC 4320-237-25P/10

FIGURE 10. GOVERNOR AND CAMSHAFT

INDEX TO PARTS, FIGURE 10

REF NO.	FUNCT GROUP	ITEM NAME	REF NO.	FUNCT GROUP	ITEM NAME	REF NO.	FUNCT GROUP	ITEM NAME
1	0308	SCREW	6	0105	KEY	11	0105	PIN
2	0308	NUT	7	0105	GEAR	12	0308	YOKE-SHAFT
3	0105	PLUG	8	0105	CAMSHAFT	13	0308	GASKET
4	0308	PIN	9	0308	SLEEVE	14	0308	BRACKET
5	0308	FLYWEIGHT AY	10	0308	SPACER			

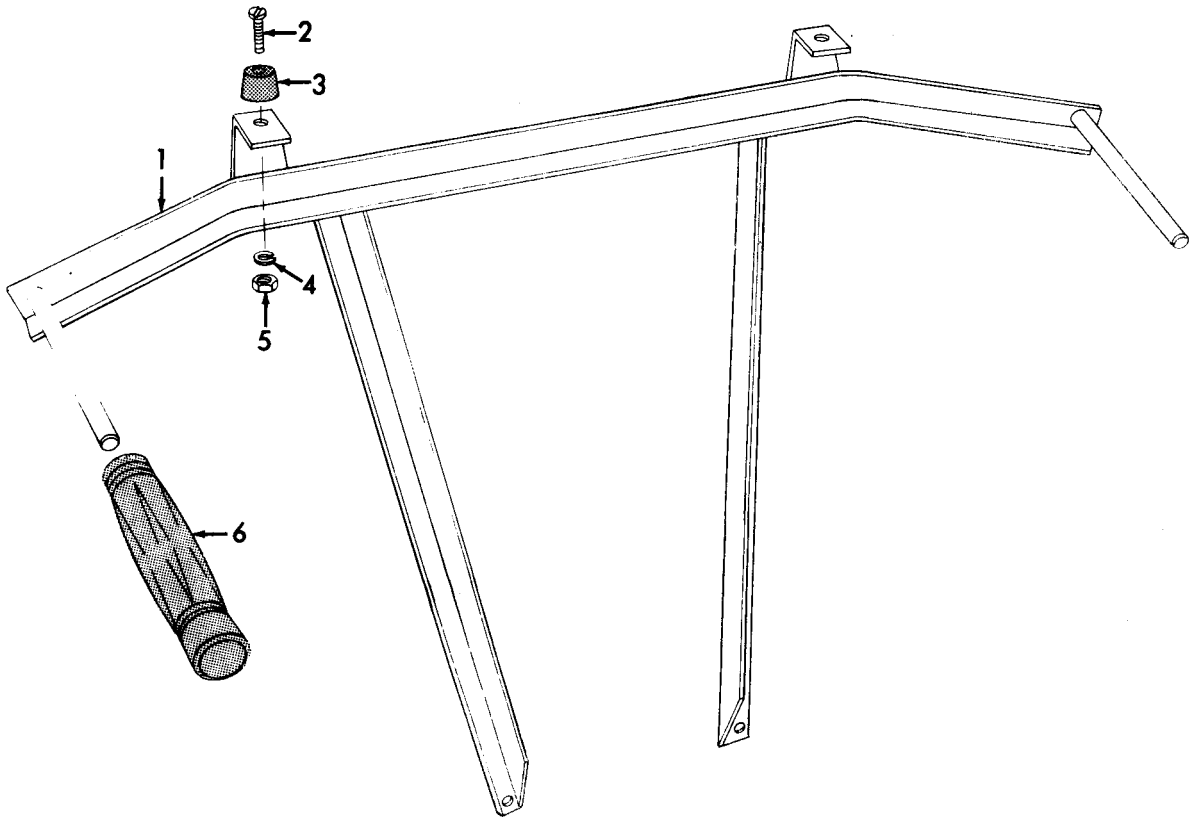


INDEX TO PARTS, FIGURE 11

REF NO.	FUNCT GROUP	ITEM NAME
1	1808	BOX
2	1808	SCREW
3	1808	BOX
4	1501	BASE
5	1808	WASHER
6	1808	NUT

MEC 4320-237-25P/11

FIGURE 11. BASE AND TOOL BOXES

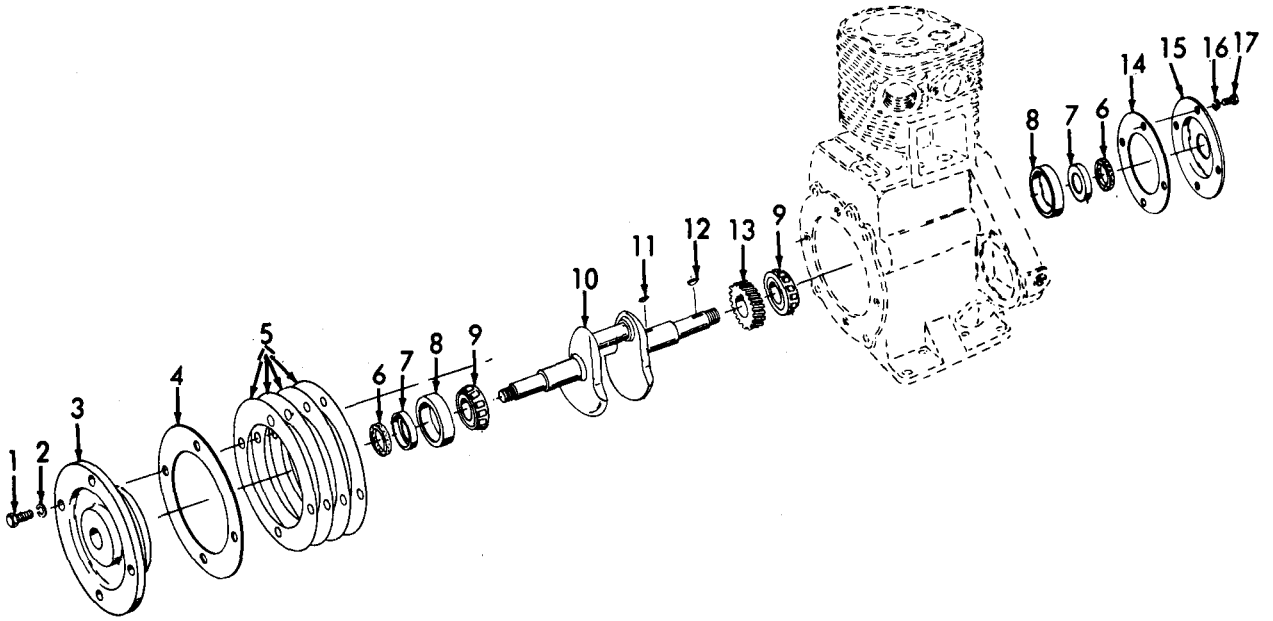


MEC 4320-237-25P/12

FIGURE 12. CARRYING HANDLE

INDEX TO PARTS, FIGURE 12

REF NO.	FUNCT GROUP	ITEM NAME
1	1501	HANDLE
2	1501	SCREW
3	1501	BUMPER
4	1501	WASHER
5	1501	NUT
6	1501	GRIP

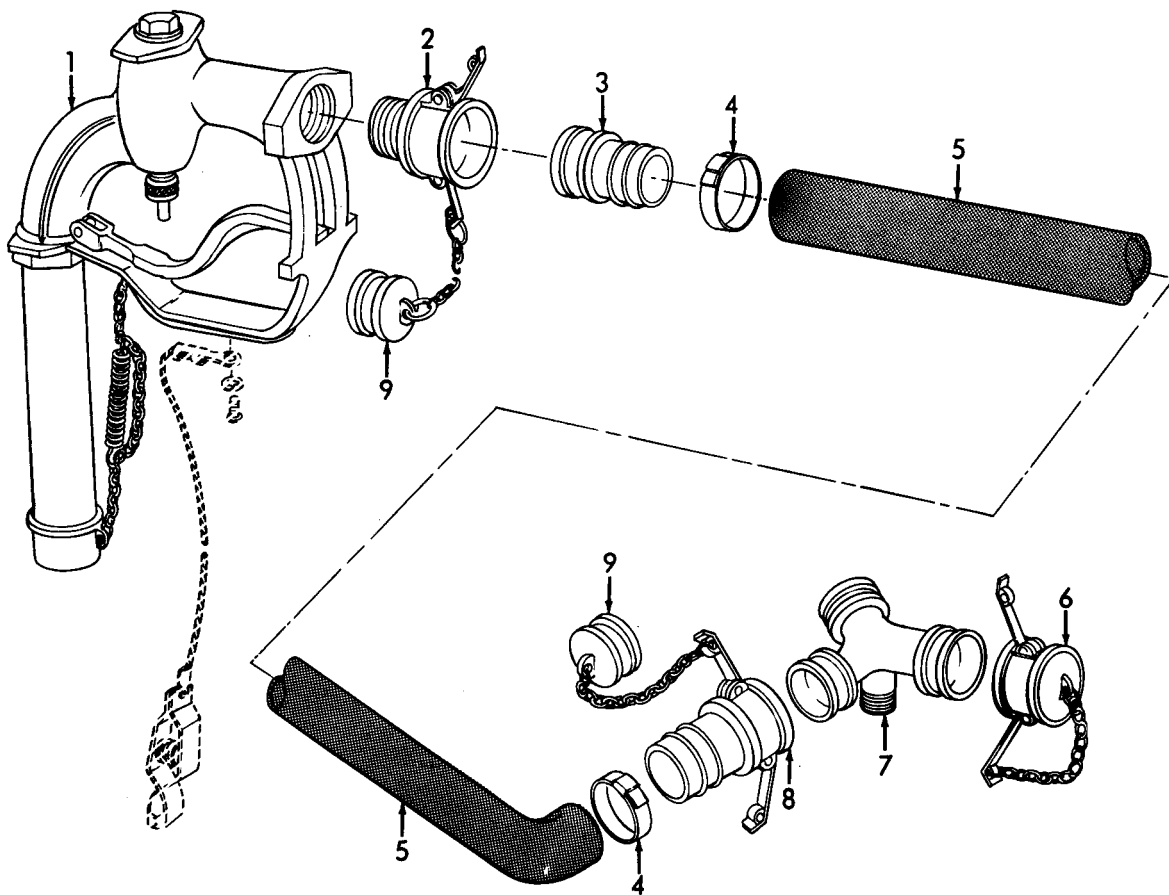


MEC 4320-237-25P/13

FIGURE 13. CRANKSHAFT

INDEX TO PARTS, FIGURE 13

REF NO.	FUNCT GROUP	ITEM NAME	REF NO.	FUNCT GROUP	ITEM NAME	REF NO.	FUNCT GROUP	ITEM NAME
1	0102	SCREW	7	0102	RETAINER	13	0102	GEAR
2	0102	WASHER	8	0102	CUP	14	0102	GASKET
3	0102	PLATE	9	0102	CONE	15	0102	PLATE AY
4	0102	GASKET	10	0102	CRNKSHAFT AY	16	0102	WASHER
5	0102	GASKET	11	0102	KEY	17	0102	SCREW
6	0102	SEAL	12	0103	KEY			

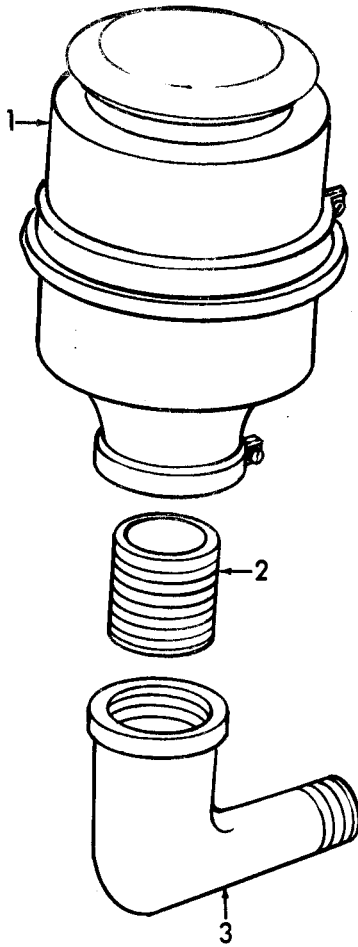


MEC 4320-237-25P/14

FIGURE 14. NOZZLE AND HOSE

INDEX TO PARTS, FIGURE 14

REF NO.	FUNCT GROUP	ITEM NAME	REF NO.	FUNCT GROUP	ITEM NAME
1	5505	NOZZLE AY	6	5505	CAP
2	5505	COUPLING HALF	7	5505	TEE
3	5505	COUPLING	8	5505	COUPLING
4	5505	CLAMP	9	5505	PLUG
5	5505	HOSE			



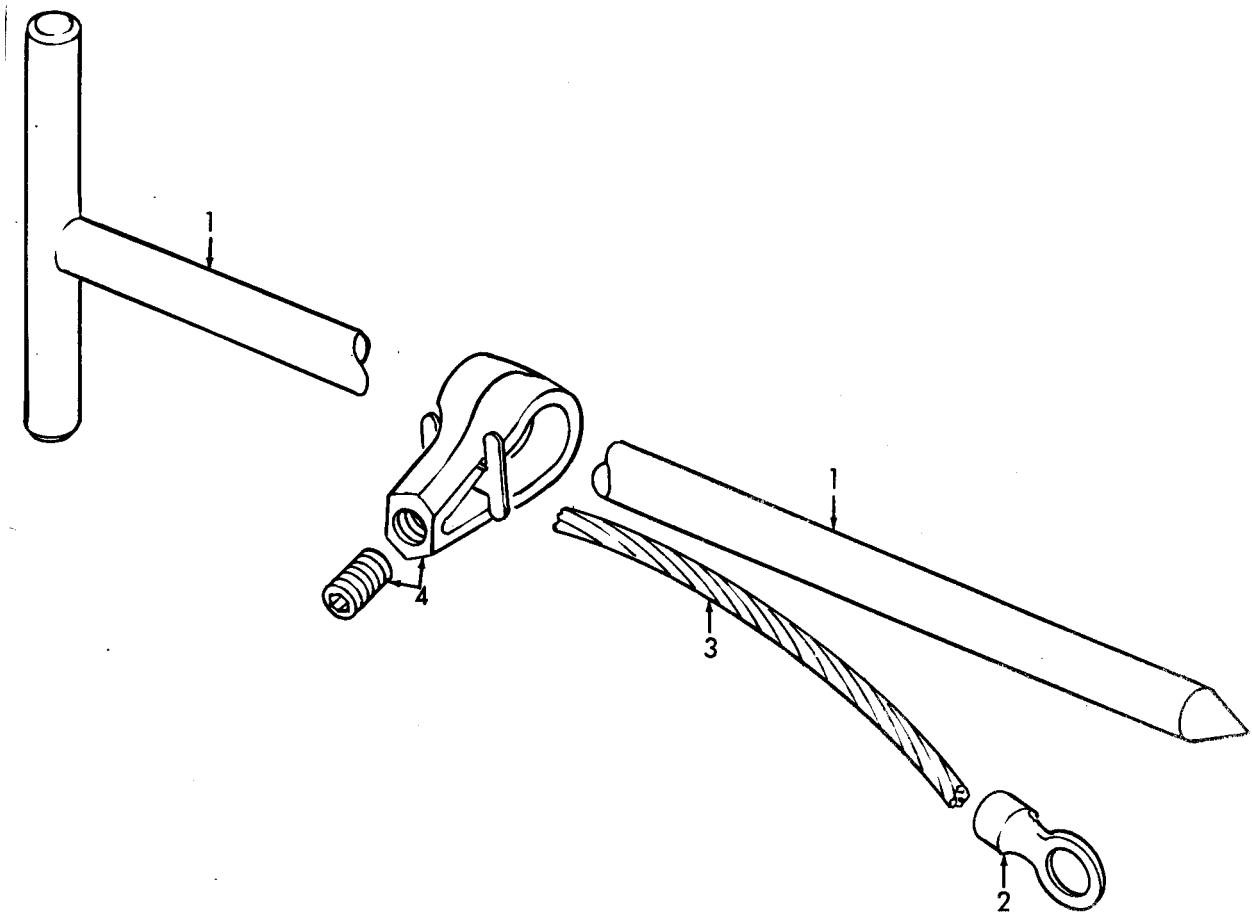
MEC 4320-237-25P/15

FIGURE 15. SPARK ARRESTOR

INDEX TO PARTS, FIGURE 15

REF NO.	FUNCT GROUP	ITEM NAME
1	0401	ARRESTOR
2	0401	NIPPLE
3	0401	ELBOW





MEC 4320-237-25P/16

FIGURE 16. GROUNDING ROD

INDEX TO PARTS, FIGURE 16

REF NO.	FUNCT GROUP	ITEM NAME
1	2202	ROD
2	2202	TERMINAL LUG
3	2202	LEAD
4	2202	CLAMP

FEDERAL STOCK NUMBER AND PART NUMBER INDEX

NUMBER	CODE	PAGE	NUMBER	CODE	PAGE	NUMBER	CODE	PAGE
AA97-ISI9	66289	009	D2565	82796	017	PC393-2	66289	003
AB99TIISI	66289	002	D6120	82796	016			014
		009	EA101W	66289	012	PD10	66289	005
AD41	66289	012	EA101ZS1	66289	012			017
AE74C	66289	012	E2303	82796	016	PD151	66289	003
AE74D	66289	012	E2513A	82796	016			014
AF43B	66289	012	FA42C	66289	012	PD153	66289	003
AG26	66289	012	FMXDE1B7S1	82796	004			014
AG31	66289	012			016	PD77	05748	003
AG34B	66289	012	F2572	82796	016			014
AH9	66289	012	F4373	82796	016	PD9	66289	002
AX2474	82796	005	GA34A	66289	010			013
		016	GB49	66289	012			015
A2437A	82796	005	GD87C	66289	004	PE3	05748	003
		016			016			014
A2492A	82796	016	G2788	82796	005	PE3	66289	002
A2492C	82796	016			016			004
A5950A	82796	016	G3861	82796	016			010
A6339	80749	002	HG201D	66289	012			013
		014	H2566	82796	017			013
BB116F9	66289	012	KA59B1	66289	013			014
BG170	66289	010	KA59B1S1	66289	013			016
BG170S2	66289	010	KF14	66289	013	PE37A	66289	002
BG171S1	66289	010	KF14S1	66289	013			002
BK97	66289	003	KF19A	66289	013			010
		014	KF22	66289	013			013
B1-264BSI	66289	002	KF30	66289	013			013
		013	K2498	82796	004	PE4	05748	001
B1498B	82796	016			016			009
B1498D	82796	016	K98	66289	012	PE5	05748	003
B6030A	82796	004	LV2563C	82796	016			014
		016	L031B	66289	001	PE52A	66289	005
B6331	80749	002			012			017
		014	ME38	66289	013	PE55	66289	003
CA51-8851	66289	010	ME88	66289	010			015
CW2514A	82796	016	MS27021-9	96906	007	PE82	66289	010
C141-4-17	79960	002			007	PF25	66289	001
		013			019			009
C142-55	79960	002			020	PG338	66289	002
		013	MS27022-9	96906	008			014
C1498G	82796	005			020	PG733	66289	003
		016	MS27024-9	96906	007			014
C181-296	79960	002			019	PH253	66289	003
		013	MS27025-9	96906	007			015
C5949	82796	016			007	PH254	66289	010
C6032B	82796	005			019	PH256	66289	010
		016			020			010
DA70BSI010US	66289	010	MS27026-9	96906	008	PH30	66289	001
DA70BSI020US	66289	010			020			012
DA70BSTD	66289	010	MS27028-9	96906	007	PH412	66289	010
DA70BS1-030US	66289	011			007	PH77	05748	001
DA70BS1STD	66289	010			007			009
DA70B010US	66289	010			008	PH84	66289	003
DA70B020US	66289	011			019			015
DB186AISP	66289	011			019	PI121	66289	002
DB186AISP0050S	66289	011			020			013
DB186AISP0200S	66289	011			020	PK50A	66289	013
DB186AISP0300S	66289	011	MS27029-9	96906	007	PK69	66289	011
DB186AISPSTD	66289	011			007	PL17	66289	010
DB186AISP0100S	66289	011			008	PL21	66289	010
DC161-1-0050S	66289	012			008			012
DC161-1-0100S	66289	011			020	PM117	66289	003
DC161-1-0200S	66289	011			020			015
DC161-1-0300S	66289	011			020	PM58	66289	013
DC161-1STD	66289	011			020	PM74	66289	004
DC198-0050S	66289	011	MS51009-1	96906	005			015
DC198-0100S	66289	011			017	P1-121	66289	003
DC198-0200S	66289	011	MY2430A	82796	005			015
DC198-0300S	66289	011			017	P2473	8276	005
DC198STD	66289	011	M2570	82796	017			017
DC199-0050S	66289	012	NC137	66289	010	P983	82796	017
DC199-0100S	66289	011	N195	82796	005	QC53	66289	001
DC199-0200S	66289	011			017			002
DC199-0300S	66289	011	N76B4	80749	002			009
DC199STD	66289	011			013			013
DE68STD	66289	011	PA217	66289	013	QD569A	66289	009
DR30-0050S	66289	011	PA264	66289	012			012
DR30-0100S	66289	011	PA340	66289	015	QD570A	66289	001
DR30-0200S	66289	011	PB164	66289	005			004
DR30-0300S	66289	011			017			009
DR30STD	66289	011	PC368	66289	001			016
DW2480	82796	016			009	QD571	66289	001

FEDERAL STOCK NUMBER AND PART NUMBER INDEX

NUMBER	CODE	PAGE	NUMBER	CODE	PAGE	NUMBER	CODE	PAGE
		009	XA52	05748	003	26650	05748	006
		015			014			018
QD572	66289	001	XA6	66289	003	2690-301-6374		003
		009			015	27286	05748	006
		012	XB20	66289	002			018
QD573	66289	009			013	279315	66289	001
		010	XC14	66289	003			009
QD573A	66289	009			014	28001CA	05748	007
		010	XD11	66289	001			019
QD574	66289	009			012	28008SA	05748	003
		010	XD15	66289	010			014
QD647	66289	002	XD17	66289	005	28016SA	05748	007
		013			017			019
QD695	66289	003	XD19	66289	001	28017	05748	007
		015			009			019
QD715	66289	002			010	28018	05748	019
		012	XD23	66289	001	28021	05748	007
QD802	66289	001			009			019
		001	XD25	05748	003	28044	05748	003
		009			014			014
		009	XD4	66289	010	2805-033-6135		011
QX2433	82796	005	XD6	66289	002	2805-143-6657		012
		017			013	2805-147-3730		013
Q2B	66289	001			014	2805-215-3827		012
		009			015	2805-244-8184		009
RB86	66289	002	XD7	6289	013			010
		012	XK3B	66289	002	2805-249-9903		010
RD107	66289	013			012	2805-268-3448		001
RF1225	05748	003	X1-1	66289	003			009
		014			014			012
RJ152-2SI	66289	002	YD300A	66289	005	2805-270-3429		012
		012			017	2805-277-2918		012
RM1280A	66289	003	0W352	78480	004	2805-301-2940		012
		014			015	2805-301-6336		010
RP902	66289	003	0W361	78480	004	2805-335-2917		012
		014			015	2805-335-9218		012
RX2425	82796	016	0W363	78480	004	2805-353-5849		010
R123-2	66289	001			015	2805-356-0940		010
		012	0W418T	78480	004			010
SA26	66289	009			015	2805-358-2303		010
		012	0W432	78480	004	2805-358-3077		012
SA61	66289	001			015	2805-376-0382		013
		012	0W447	78480	004	2805-376-0395		010
SA80	66289	013			015	2805-376-0398		009
SD251	66289	006	00-5-14-1286	05748	005			012
		018			017	2805-376-0416		001
SE153	66289	004	00-5-14-1291	81337	006			012
		016			018	2805-376-0417		013
SE53A16S1	66289	004	00-5-14-1292	81337	006	2805-376-0419		013
		016			018	2805-383-4090		010
SE54	66289	004	02-5-14-1285	81337	004	2805-391-4152		010
		016			006	2805-447-9294		013
SZ2563	82796	017			015	2805-448-1050		012
S2568	82796	016			018	2805-511-6919		013
S5963	82796	017	06096	78480	004	2805-527-7604		009
TC301-3	66289	003			015			010
		014	07769	78480	004	2805-537-0418		012
TC321	66289	015			015	2805-555-2119		011
TC322SI	66289	015	11193A	79960	002			011
TC323	66289	015			013	2805-560-8750		011
TC324C	66289	015	1316BIK01	80749	002	2805-620-0156		012
TC325	66289	014			013	2805-672-9509		010
TC332	66289	003	131B1	80749	002	2805-672-9510		004
		015			014			016
T2477C	82796	005	15118	60038	010	2805-695-2177		012
		017	15250	60038	010	2805-695-2186		013
UC103A	66289	002	1610-30	04147	004	2805-697-7823		002
		013			015			012
U268B	66289	002	18327	05748	003	2805-740-0243		013
		013			014	2805-776-0512	012	
VB112	66289	003	18328	05748	003	2805-790-7778		001
		014			014			012
VC22C	66289	003	18329SA	05748	003	2805-792-9761		012
		014			014	2805-808-5675		012
VE304	66289	003	229B7K01	80749	002	2805-828-9520	011	
		015			013	2805-837-1181	009	
VE363A	66289	003	2417	05748	007	2805-837-1182		001
		014			019			009
V4631	82796	016	2418	05748	007	2805-839-6105		001
WY5957	82796	017			019			009
XA34	66289	004	2540-703-9134		004	2805-912-4316		001
		016			015			

FEDERAL STOCK NUMBER AND PART NUMBER INDEX

NUMBER	CODE	PAGE	NUMBER	CODE	PAGE	NUMBER	CODE	PAGE
2805-919-3099		001	2930-839-6111		004			007
		001			016			019
		009	2940-423-3292		002			020
		009			014	4730-360-0592		007
2805-919-3602		002	2940-675-5751		002			007
		012			013			019
2910-142-2738		004	2940-839-6107		002			020
		015			013	4730-555-8325		007
2910-202-8795		004	2990-224-8188		004			020
		015			015	4730-851-6863		008
2910-215-7236		015	2990-301-6374		015			020
2910-239-1471		001	2990-353-5961		003	4730-980-9411		007
		002			014			019
		002	2990-376-0386		014	4930-B60-0569		007
		099	2990-383-9339		003			020
		013			014	4930-837-7795		008
		013	2990-422-6161		002			020
2910-269-7126		004			013	4940-B90-0009		006
		015	2990-424-2835		003			018
2910-329-0149		002			014	4940-672-4764		006
		013	2990-511-7629		015			018
2910-358-4516		002	2990-536-2962		003	5305-010-2585		017
		013			014	5305-012-2181		001
2910-382-8768		004	2990-661-8942		015			009
		015	2990-701-6853		015	5305-018-6612		019
2910-429-6047		003	2990-718-6022		002	5305-042-0449		017
		014			013	5305-042-0463		005
2910-447-9260		002	2990-840-8817		004			017
		013			015	5305-042-0465		005
2910-447-9287		003	2990-981-0763		016			017
		014	2990-989-3247		004	5305-049-9608		010
2910-594-9067		002			015	5305-058-3888		005
		013	3110-100-0522		010			018
2910-672-1914		002	3110-100-3158		010	5305-281-6387		005
		003	3110-100-6009		010			017
		013	3110-100-6180		013	5305-499-9608		001
		014	3110-144-8998		016			009
			3207	05748	007	5305-550-1310		007
2910-840-8811		005			019			019
2910-841-8938		003	417A1K10	80749	002	5305-637-4028		006
		014			013			018
2920-015-6244		004	4320-B90-0013		006	5305-655-9502		005
		016			018			017
2920-047-4530		001	4320-B90-0014		008	5305-831-0140		016
		004			020	5306-206-4344		001
		009	4320-B90-0015		008			009
		016			020	5306-207-9138		005
			4320-360-0586		019			017
2920-286-2712		016	4320-360-0597		007	5306-356-0965		003
2920-315-1970		016			019			015
2920-319-5055		005			019			015
		016	4320-360-0601		007	5307-286-0334		001
2920-319-5058		016	4320-360-0602		007	5310-010-6496		005
2920-349-3887		005			019			005
		017	4320-360-0947		007			017
2920-354-074		017						017
2920-354-0750		005						018
		016			019	5310-012-0380		006
2920-354-0766		016			020			018
2920-356-1221		016	4320-837-7762		019	5310-205-7981		016
2920-428-7543		016	4320-913-7131		007	5310-208-4764		005
2920-444-8599		017			019			017
2920-455-7098		016	4320-934-7865		007	5310-260-7924		001
2920-523-8602		004			019			007
		016	4510-193-3101		002			009
2920-714-5868		005			012			019
		016	4720-B90-0340		019	5310-261-7340		001
2920-714-5869		004			020			007
		016	4720-B90-0341		020			007
2920-810-7082		005			020			009
		017	4720-303-4984		007			019
2920-839-6106		005			019			019
		017	4730-203-1010		008			019
2920-839-6113		005			020	5310-262-2998		005
		017	4730-254-1802		004			017
2920-849-2137		016			015	5310-274-7766		007
2920-849-2138		005	4730-265-6907		004			019
		017			015	5310-275-5512		006
2920-939-9834		005	4730-288-8571		003			018
		016			014	5310-285-1591		016
2920-939-9835		017	4730-360-0589		008	5310-290-5759		010
2930-384-8486		004			020	5310-655-6369		005
		016	4730-360-0591		007			017
2930-839-6109		004						
		016						

FEDERAL STOCK NUMBER AND PART NUMBER INDEX

NUMBER	CODE	PAGE	NUMBER	CODE	PAGE	NUMBER	CODE	PAGE
5310-737-2632		017						
5315-221-0480		012						
5315-233-8888		013						
5315-265-9197		003						
		014						
5315-273-7846		002						
		013						
5315-715-1699		017						
5330-187-2962		004						
		015						
5330-285-5061		001						
		009						
		015						
5330-298-5170		009						
		010						
5340-B90-0262		016						
5340-147-3745		013						
5340-246-3405		016						
		016						
5340-256-7147		003						
		015						
5340-351-6482		011						
5340-823-5316		007						
		007						
		008						
		008						
		020						
		020						
		020						
		020						
5340-823-5317		007						
		008						
		020						
		020						
5340-825-5317		007						
		007						
		019						
		019						
5364	05748	019						
5975-577-8825		006						
		018						
6680-790-6346		001						
		012						
8021	05748	007						
		019						
8022	05748	007						
		019						
8030	05748	007						
		019						
8053	05748	007						
		019						
8054	05748	007						
		019						
8121SA	05748	007						
		019						
8139SA	05748	007						
		019						

By Order of the Secretary of the Army:

HAROLD K. JOHNSON,  
*General, United States Army,*  
*Chief of Staff.*

Official:

KENNETH G. WICKHAM,  
*Major General, United States Army,*  
*The Adjutant General.*

Distribution:

**Active Army:**

USASA (2)  
ACSI (1)  
DCSLOG (1)  
CNGB (1)  
TSG (1)  
CC-E (1)  
Dir of Trans (1)  
CofSptS (1)  
CofEngrs (3)  
USAMB (1)  
USAARTYBD (2)  
USAARMBD (2)  
USAIB (2)  
USAADB (2)  
USAAESWBD (2)  
USAAVNBD (2)  
USCONARC (3)  
OS Maj Comd (5) except  
    USASETAF (2)  
    USARJ (1)  
USAMC (1)  
MDW (1)  
Armies (2)  
Corps (2)  
Div (2)  
Engr Bde (1)  
Svc Colleges (2)  
Br Svc Sch (2)  
USACDCEC (10)

USMA (2)  
Gen Dep (10)  
Engr Dep (10)  
A Dep (2) except  
    TOAD (3)  
USA Tml Comd (2)  
Army Tml (1)  
Div Engr (2)  
Dist Engr (2)  
USAERDL (3)  
USAMEC (46)  
Emg Cen (5)  
US. REUR Engr Proc Cen (2)  
US REUR Engr SUP Con Agcy (10)  
Engr FLDMS (2)  
Ft Box FLDMS (10)  
A... (3)  
U... EURCOMZ (2)  
    (1)  
    (1)  
    MC (1)  
    arg under fol TOE:  
    copies each UNOINDC)  
    (5)  
    (5)  
    (5)

NG: None.

**USAR:** Same as Active Army except allowance is one copy to each unit.

For explanation of abbreviations used, see AR 320-50.



**TM 5-4320-237-25P PUMP, CENTRIFUGAL: GASOLINE ENGINE DRIVEN, 50 GPM, 100 FT HEAD,—1967**

